



BELT CONVEYOR MAJOR SUPPORTING PRODUCTS INSTRUCTION BOOKLET

带式输送机重要配套产品说明书

Latest model, environment friendly, high
efficiency, cleaning, correction, anti-tear, striking
resistant, centralized drainage, snow plow

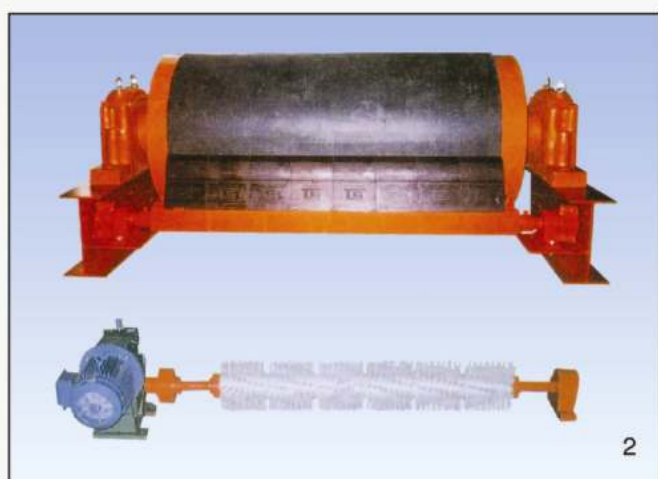
新型、环保、高效、清扫、纠偏、防撕裂、防冲击、集中排水和犁雪

宁波探索机械制造有限公司

NINGBO TANSUO MACHINE MANUFACTURING CO. LTD.



1. 吸水装置 wiping device
2. 清扫器 cleaner
3. 排渣滚筒 residue pulley
4. 防撕裂、防冲击 correction, anti-tear
5. 调心托辊 Alignment Idler



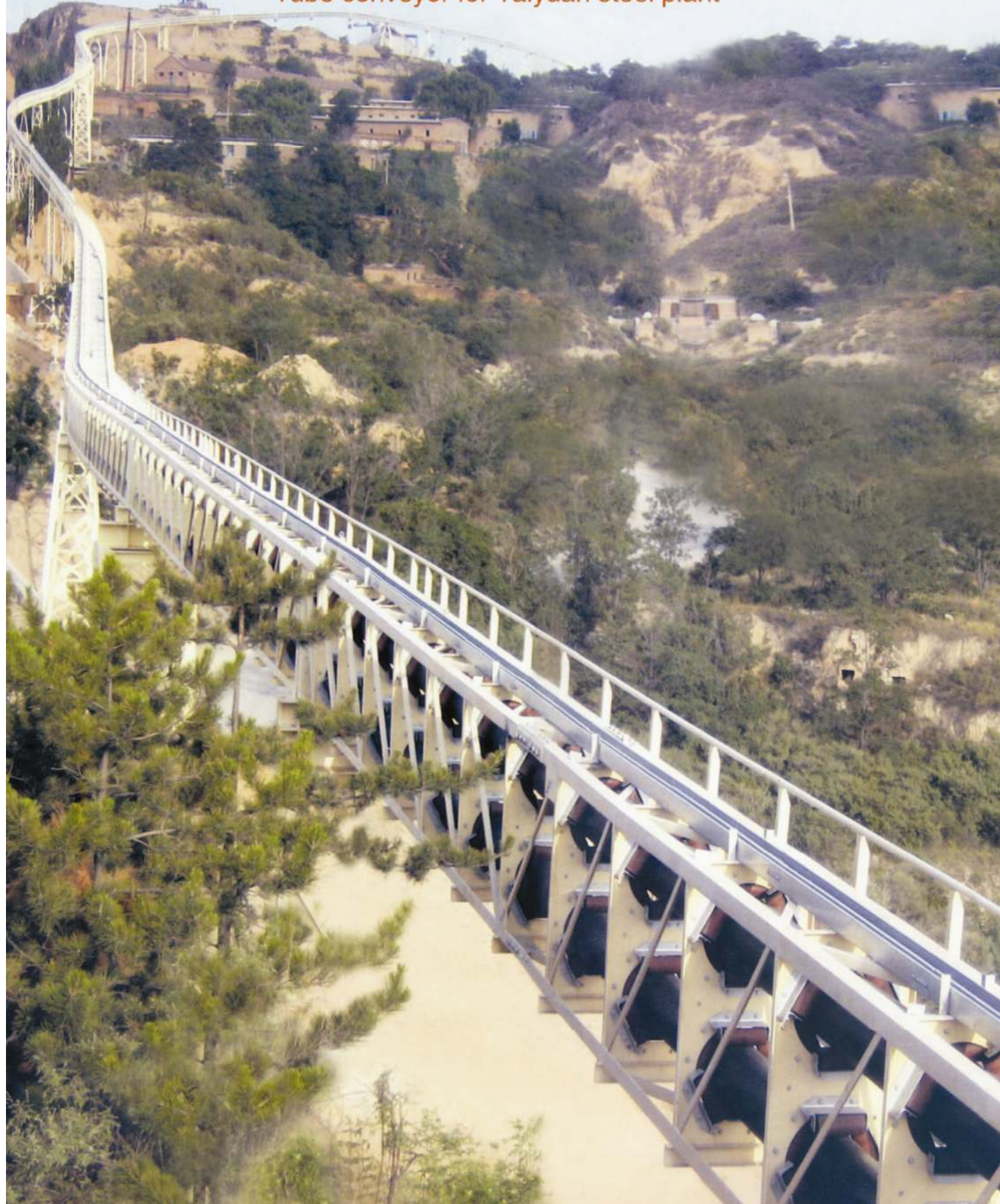


目 录

contents

1.排渣滚筒 -----	1
Residue Pulley	
2.清扫器 -----	6
Cleaner	
3.排水、吸水、犁雪装置 -----	14
Open Conveyor Drainage, Wiping, and Snow Plow Device	
4.防撕裂缓冲装置 -----	19
Anti-Tear Cushioning Device	
5.调心托辊 -----	23
Aligning Idler	

太原钢厂管状输送机
Tube conveyor for Taiyuan steel plant



排 碴 滚 筒

Residue Pulley

■ 1.概述 Overview

- 排碴滚筒是散料输送系统中重要的部件，选用设计合理的滚筒可以降低整个输送系统的运行故障及维护工作，延长输送系统的使用寿命。
- Residue Pulley is one of important components in the bulk conveying system. By choosing a well reasonably designed pulley, it can reduce the fault rate and maintenance work of the whole bulk conveying system, and also extend the service life of the system.

■ 2.排碴滚筒特点 Characteristics of Residue Pulley

- 2.1 宁波探索机械制造有限公司是专业设计、制造散料输送系统及部件的企业，具有先进的滚筒设计、制造理念及经验，针对国内标准滚筒在实际运行中容易产生胶面及筒体磨损、脱胶、断裂、安装维护不便、轴承座密封性能差等现象，结合国外先进技术，特设计编制普通排碴滚筒PP、清扫排碴滚筒QP设计选用手册供用户参考选用，本系列滚筒具有克服坚硬的物料（矿碴、矿砂、煤块）进入输送带与滚筒之间，引起输送带破损、清扫输送带粘附物料、耐磨损等特点。当输送系统存在胶带跑偏问题，可以选用鼓形排碴滚筒进行纠偏。排碴滚筒是宁波探索机械制造有限公司研制开发的新型滚筒，具有专利性质，专利号：ZL98332400.X。
- 2.1 Ningbo TANSUO Machine manufacturing Co.,Ltd is a company specializing in designing and manufacturing for bulk conveying components and systems. According to the company's advanced drum designing experiences, manufacturing concepts and experiences, and learning from past problems such as shell wear, degumming, fracture, inconvenience of installation, poor seal of bearing house that occurred during actually operation, combined overseas advanced technology, Ningbo TANSUO designed and prepared the normal residue pulley PP, and the cleaning residue pulley QP design selection handbook for user to choose from. This series of pulleys stop hard material (stone slag, ore sand, and coal slag) from entering into conveyer belt and pulleys, and avoiding tear and wear of belt, when the conveying system face problem such as belt off track, drum style residue pulley can be used for rectification. It is designed and developed in Ningbo TANSUO Machine manufacturing Co. Ltd with patent number: ZL98332400. X.
- 2.2 排碴滚筒轴承座采用立式剖分轴承座，具有安装、拆卸、维修方便等优点，预装配轴后可以直接安装。当底座与安装基面接触，只需将座盖放在底座上并拧紧联接螺栓便可完成安装。探索公司（TS）立式剖分轴承座设计了三种密封形式供用户选择，以应用于不同的运行工况。
- 2.2 Residue pulley uses vertical split bearing house, it has the benefit of easy and convenient installation, removal, and maintenance. Preassembled bearing house can be installed directly. When the pedestal contacts with installation base, just need to put the pedestal onto the base and tighten the screw to complete the installation. Ningbo TANSUO (TS) designed three kinds of sealing form for the vertical split bearing house to suit different operation conditions.



- 2.2.1 唇形密封 (TSC) : 唇形密封采用的骨架油封的材料为耐磨橡胶, 具有良好的拉伸性, 主要为油脂润滑设计, 适用速度 $<5\text{m/s}$, 适用温度 $<110^{\circ}\text{C}$, 推荐轴的公差为h9。
- 2.2.1 Lip Seal(TSC): Material of skeleton oil seal for the lip seal are wear-resisting rubber, it has good stretch ability, mainly designed for the grease lubrication, applicable speed $< 5\text{ m/s}$, suitable temperature $< 110^{\circ}\text{C}$, and recommended shaft tolerance is h9.



唇形密封TSC
Lip Seal TSC



唇形密封TSC
Labyrinth Seal TSM



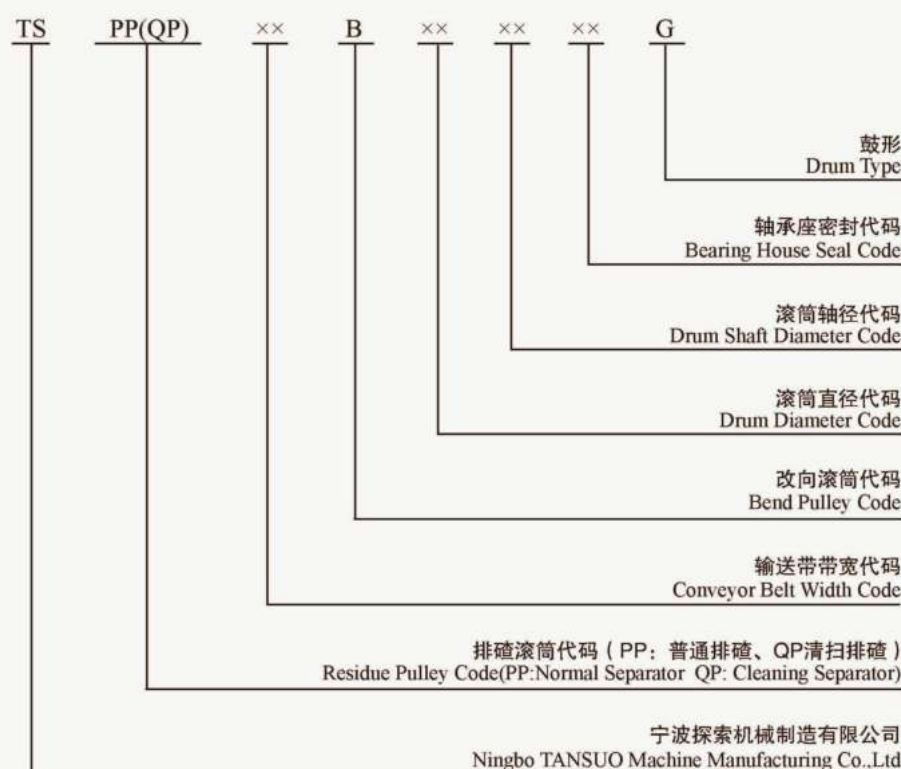
唇形密封TSC
Taconite Seal TST

- 2.2.2 迷宫密封 (TSM) : 在恶劣的运行条件下或高速运行中, 推荐使用迷宫式密封, 迷宫环是钢质的, 有两级径向排列的迷宫, 与轴承座的槽形成窄缝隙, 迷宫环通过空心O形橡胶环固定在轴上, 随着轴一起旋转。轴最大允许偏差大约为 0.3° , 迷宫密封的运行温度范围为 -50°C ~ $+200^{\circ}\text{C}$, 推荐轴的公差为h9。
- 2.2.2 Labyrinth Seal(TSM): In bad conditions or high speed operation, it is recommended to use labyrinth seal, labyrinth ring is steel, it has two stage radial labyrinth, and it forms narrow gap with the bearing house, hollow o-shape rubber is used to fix labyrinth ring onto the axis, and the labyrinth ring rotate with the shaft. Shaft maximum allowable deviation is about 0.3° , labyrinth seal operating temperature ranges from -50°C ~ $+200^{\circ}\text{C}$, recommended shaft tolerance is h9.

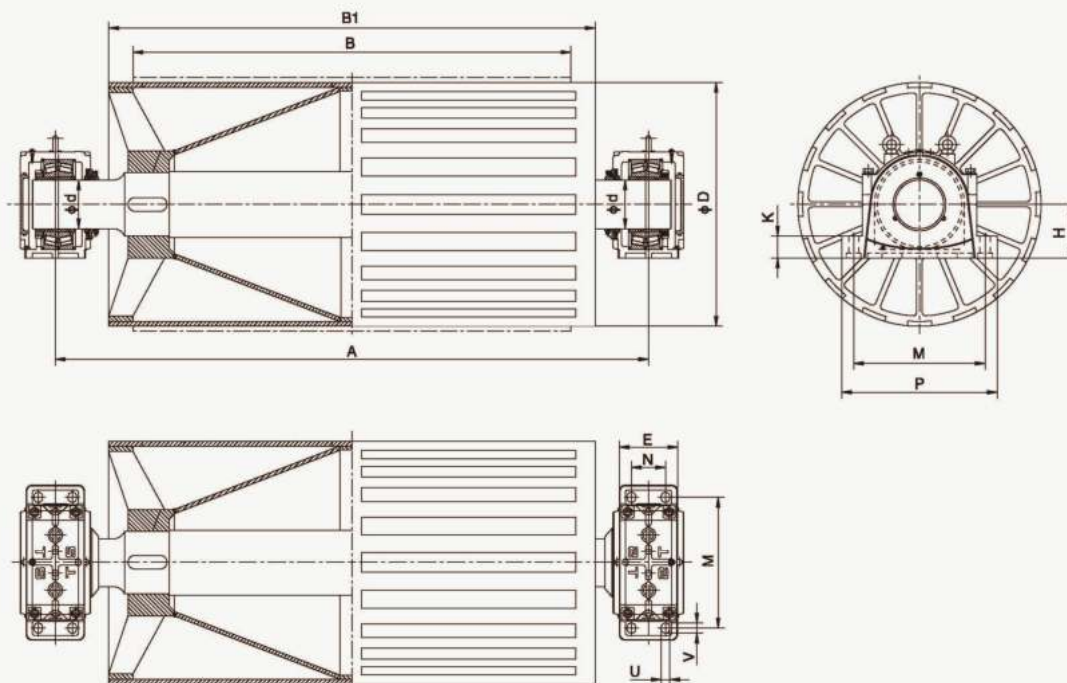
- 2.2.3铁燧岩密封 (TST)：铁燧岩密封应用于运行条件非常困难的场合，如采矿，现场会产生颗粒极小的矿粉，用普通密封无法抑制矿粉进入轴承座内腔。铁燧岩密封是基于迷宫密封发展的一种新型密封机构，迷宫环的缝隙可通过油嘴注入润滑油脂，与V形油封配合形成良好的密封体系，阻断矿粉的进入。轴最大允许偏差大约为 0.3° ，运行的温度范围 $-40^{\circ}\sim+110^{\circ}\text{C}$ 。推荐轴的公差为h9。
- 2.2.3 Taconite Seal (TST): Taconite Seal are used in very tough operating situation, such as mining condition where tiny particles of mineral powder will be produced, and the common seal can't stop mineral powder from entering into the bearing inner chamber. Taconite Seal is a new type of sealing mechanism that based on the development of labyrinth seal, lubricating grease can be injected into labyrinth ring crack using the nozzle injection, and combine with V oil seal to form a good sealing system, stops mineral powder from entering. Shaft maximum allowable deviation is about 0.3° , the operating temperature ranges from $-40^{\circ}\sim+110^{\circ}\text{C}$. Recommended shaft tolerance is h9.

3.选用说明 Selection Instruction

- 3.1 排渣滚筒选用说明
- 3.1 Residue Pulley Selection Instruction



4、普通排渣滚筒外形、技术参数 Appearance and technical parameters of ordinary residue pulley

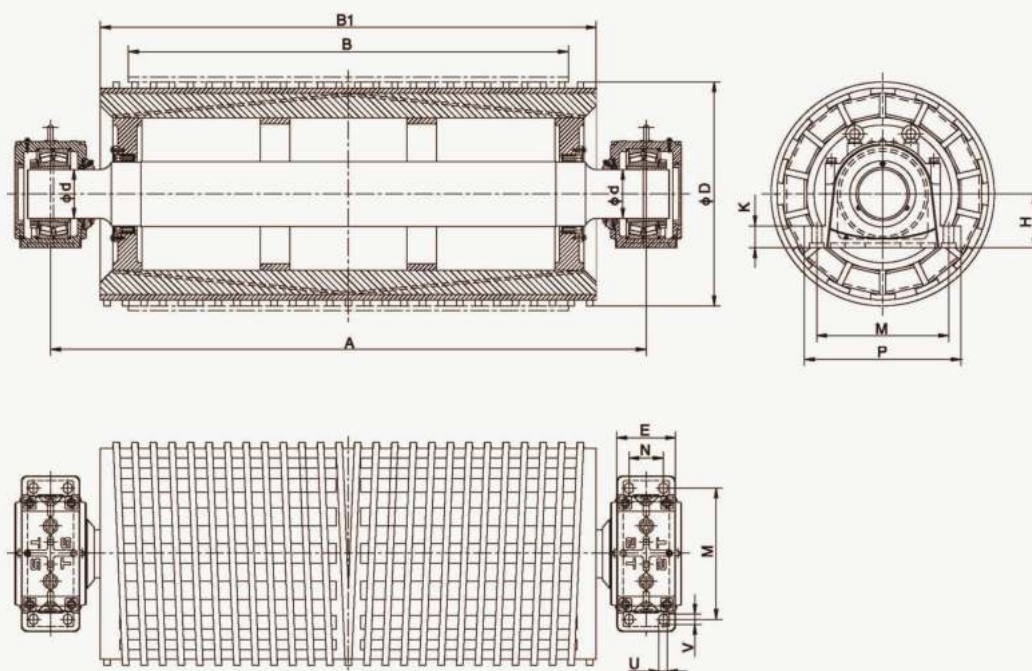


带宽B Belt Width	D	d	合力 FKN resultant force FKN	A	B1	K	H	M	P	N	E	U	V	轴承型号 Bearing Model	质量kg Weight	滚筒型号 Drum Model
1000	500	100	35	1500	1200	45	125	350	410	---	120	26	32	22222K	680	TSPP100B0510
	630	125	60	1500	1200	50	150	420	500	---	150	35	42	22228K	1010	TSPP100B0612
	800														1200	TSPP100B0712
1200	500	125	60	1750	1400	50	150	420	500	---	150	35	42	22228K	900	TSPP120B0512
	630	140	100	1750	1400	60	170	470	550	---	160	35	42	22232K	1280	TSPP120B0614
	800														1500	TSPP120B0714
1400	500	140	100	2050	1600	60	170	470	550	---	160	35	42	22232K	1370	TSPP140B0514
	630														1550	TSPP140B0614
	800	160	125	2050	1600	75	180	450	530	110	190	28	34	23136K	2220	TSPP140B0716
1600	630	160	125	2250	1800	75	180	450	530	110	190	28	34	23136K	2310	TSPP160B0616
	800	180	200	2250	1800	85	210	510	610	130	230	35	42	23140K	3020	TSPP160B0718
	1000	200	300	2250	1800	90	220	540	640	140	240	35	42	23144K	4320	TSPP160B0820
1800	630	160	125	2400	2000	75	180	450	530	110	190	28	34	23136K	2450	TSPP180B0616
	800	180	200	2400	2000	85	210	510	610	130	230	35	42	23140K	3350	TSPP180B0718
	1000	200	300	2400	2000	90	220	540	640	140	240	35	42	23144K	4790	TSPP180B0820
2000	630	180	200	2650	2200	85	210	510	610	130	230	35	42	23140K	3140	TSPP200B0618
	800	200	300	2650	2200	90	220	540	640	140	240	35	42	23144K	4880	TSPP200B0720
	1000	220	350	2650	2200	95	240	600	700	150	260	35	42	23148K	6020	TSPP200B0822

注：宁波探索公司可根据顾客要求设计、制造各类非标排渣滚筒。（鼓形排渣滚筒可以解决胶带跑偏问题）

Note: Ningbo TANSUO Machine Manufacturing Co.,Ltd can design and manufacture all kinds of non-standard residue pulley according to the customer requirements. (Drum Type residue pulley can solve belt off tracking problem)

5、清扫排渣滚筒QP外形、技术参数 Appearance and technical parameters of QP type cleaning residue pulley



带宽B Belt Width	D	d	合力 FKN resultant force FKN	A	B1	K	H	M	P	N	E	U	V	轴承型号 Bearing Model	质量kg Weight	滚筒型号 Drum Model
1000	500	100	35	1500	1200	45	125	350	410	---	120	26	32	22222K	715	TSQP100B0510
	630	125	60	1500	1200	50	150	420	500	---	150	35	42	22228K	1060	TSQP100B0612
	800														1260	TSQP100B0712
1200	500	125	60	1750	1400	50	150	420	500	---	150	35	42	22228K	950	TSQP120B0512
	630	140	100	1750	1400	60	170	470	550	---	160	35	42	22232K	1350	TSQP120B0614
	800														1580	TSQP120B0714
1400	500	140	100	2050	1600	60	170	470	550	---	160	35	42	22232K	1440	TSQP140B0514
	630														1630	TSQP140B0614
	800	160	125	2050	1600	75	180	450	530	110	190	28	34	23136K	2330	TSQP140B0716
1600	630	160	125	2250	1800	75	180	450	530	110	190	28	34	23136K	2320	TSQP160B0616
	800	180	200	2250	1800	85	210	510	610	130	230	35	42	23140K	3170	TSQP160B0718
	1000	200	300	2250	1800	90	220	540	640	140	240	35	42	23144K	4540	TSQP160B0820
1800	630	160	125	2400	2000	75	180	450	530	110	190	28	34	23136K	2570	TSQP180B0616
	800	180	200	2400	2000	85	210	510	610	130	230	35	42	23140K	3520	TSQP180B0718
	1000	200	300	2400	2000	90	220	540	640	140	240	35	42	23144K	5030	TSQP180B0820
2000	630	180	200	2650	2200	85	210	510	610	130	230	35	42	23140K	3300	TSQP200B0618
	800	200	300	2650	2200	90	220	540	640	140	240	35	42	23144K	5120	TSQP200B0720
	1000	220	350	2650	2200	95	240	600	700	150	260	35	42	23148K	6320	TSQP200B0822

注：宁波探索公司可根据顾客要求设计、制造各类非标排渣滚筒。（鼓形排渣滚筒可以解决胶带跑偏问题）

Note: Ningbo TANSUO Machine Manufacturing Co.,Ltd can design and manufacture all kinds of non-standard residue pulley according to the customer requirements. (Drum Type residue pulley can solve belt off tracking problem)

清扫器 Cleaner

■ 1.概述 Overview

- 清扫器是散料输送系统中重要的部件，选用设计合理的清扫器可以降低整个输送系统的运行故障及维护工作、改善输送系统的工作环境、延长输送系统的使用寿命。
- Cleaner is an important component of bulk conveying system. Selecting reasonably designed cleaner can reduce the operation fault rate of the whole conveying system, reduce maintenance work, improve the conveying system working environment, and extend the service life of conveying system.

■ 2.宁波探索清扫器的设计理念 Design concept of the Cleaner in Ningbo TANSUO

- 2.1 同时使用多类型清扫器以确保超级清扫效果。
- 2.2 清扫系统应配合输送带材料、转运物料和工况实际要求。
- 2.3 清扫器应尽可能靠近卸料口。
- 2.4 清扫器应简化维护，包括快速刀片替换和最少的张力调整。
- 2.1 Use multiple type of cleaner to ensure excellent cleaning results.
- 2.2 Cleaner should match up with the conveyor belt material, transport material and actual usage conditions and requirements.
- 2.3 Cleaner should be located close to the discharge port.
- 2.4 Cleaner should be easy to maintain, including rapid blade replacement and least amount of tension adjustment.

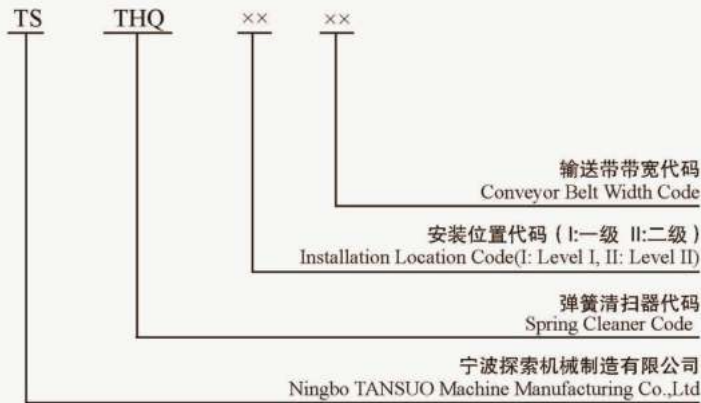
■ 3.宁波探索清扫器的特点 Characteristics of the Cleaner from Ningbo TANSUO

- 3.1 具有多样化的清扫器，不同类型的清扫器具有不同的清扫功能。
- 3.2 有效清除粘附物，而不存在损坏皮带、接头或清扫系统的风险。
- 3.3 结构设计紧凑、操作简单、清扫刀片维护方便。
- 3.4 探索公司清扫器的张紧器可有效保持清扫器的正常工作压力，保持清扫器长时间的清扫效果。
- 3.1 multiple designs of cleaner are available, each with different cleaning function.
- 3.2 effectively remove adhesive object, and does not damage belt, joint or cleaning system.
- 3.3 compact structure design, easy operation, convenient maintaining of cleaning blade.
- 3.4 the tensioner of cleaner from Ningbo TANSUO can keep the cleaner normal working pressure effectively, and maintain longer cleaning performance.

■ 4.清扫器类型 Cleaner Models

- 4.1 弹簧清扫器
- 4.1 Spring Cleaner

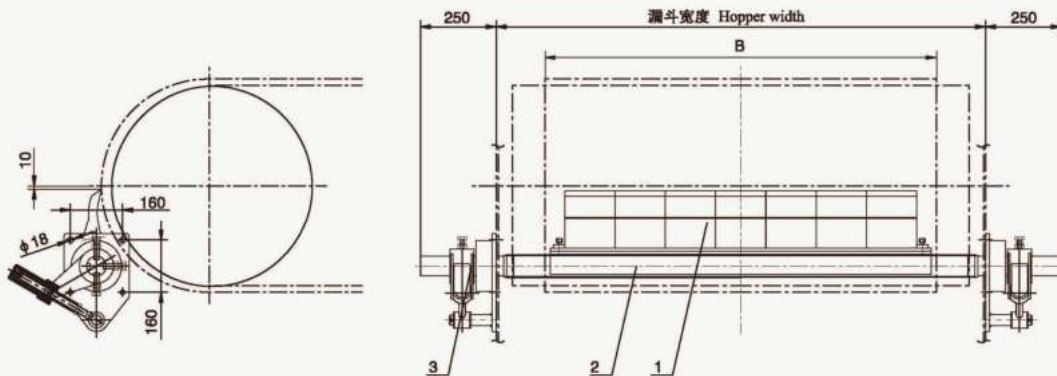
弹簧清扫器选用说明
Selection Description of Cleaner



- 弹簧清扫器刀片采用耐磨聚氨酯材料，张紧器的功能采用弹簧来实现，张紧力可调节。
- Blades of spring cleaner use wear-resistant polyurethane materials, function of tensioner is realized using springs, tension force can be adjusted.

一级弹簧清扫器THQI外形、技术参数

Level I Spring Cleaner THQI appearance and technical parameters



1—清扫刮板 2—刮板支架 3—张紧器
1— Cleaner Scraper 2— Scraper support 3— Tensioner

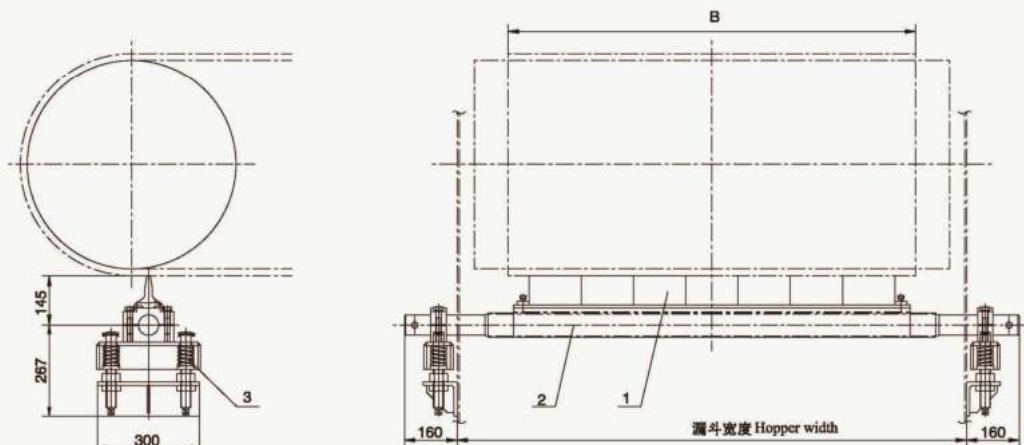
带宽B Belt Width B	一级弹簧清扫器型号 Level I Spring Cleaner Model	质量kg Weight kg	漏斗宽度 Hopper Width	带宽B Belt Width B	一级弹簧清扫器型号 Level I Spring Cleaner Model	质量kg Weight kg	漏斗宽度 Hopper Width
800	TS-THQI 80	55	顾客提供 Supplied by customer	1600	TS-THQI 160	75	顾客提供 Supplied by customer
1000	TS-THQI 100	60		1800	TS-THQI 180	80	
1200	TS-THQI 120	65		2000	TS-THQI 200	85	
1400	TS-THQI 140	70		2200	TS-THQI 220	90	

注：宁波探索公司可根据客户要求设计、制造各类非标清扫器

Note: Ningbo TANSUO Machine Manufacturing Co.,Ltd can design and manufacture all kinds of non-standard cleaner according to the customer requirements.

二级弹簧清扫器THQII外形、技术参数

Level II Spring Cleaner THQII appearance and technical parameters



1—清扫刮板 2—刮板支架 3—张紧器
1— Cleaner scraper 2— Scraper support 3— Tensioner

带宽B Belt Width B	一级弹簧清扫器型号 Level I Spring Cleaner Model	质量kg Weight kg	漏斗宽度 Hopper Width	带宽B Belt Width B	一级弹簧清扫器型号 Level I Spring Cleaner Model	质量kg Weight kg	漏斗宽度 Hopper Width
800	TS-THQII 80	55	顾客提供 Supplied by customer	1600	TS-THQII 160	75	顾客提供 Supplied by customer
1000	TS-THQII 100	60		1800	TS-THQII 180	80	
1200	TS-THQII 120	65		2000	TS-THQII 200	85	
1400	TS-THQII 140	70		2200	TS-THQII 220	90	

注：宁波探索公司可根据顾客要求设计、制造各类非标清扫器

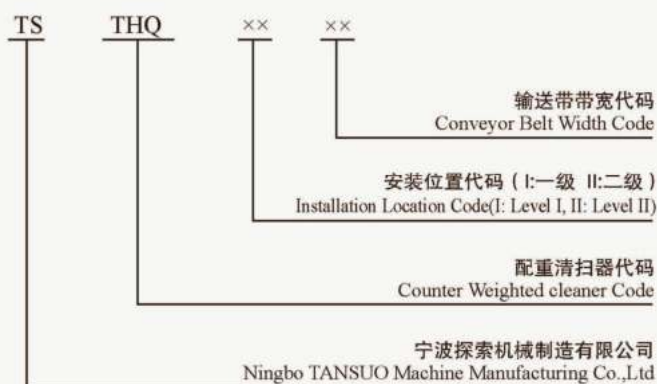
Note: Ningbo TANSUO Machine Manufacturing Co.,Ltd can design and manufacture all kinds of non-standard cleaners according to the customer requirements.

4.2 配重清扫器

4.2 Counter Weighted Sweeper

配重清扫器选用说明

Counter Weighted cleaners Selection Descriptions



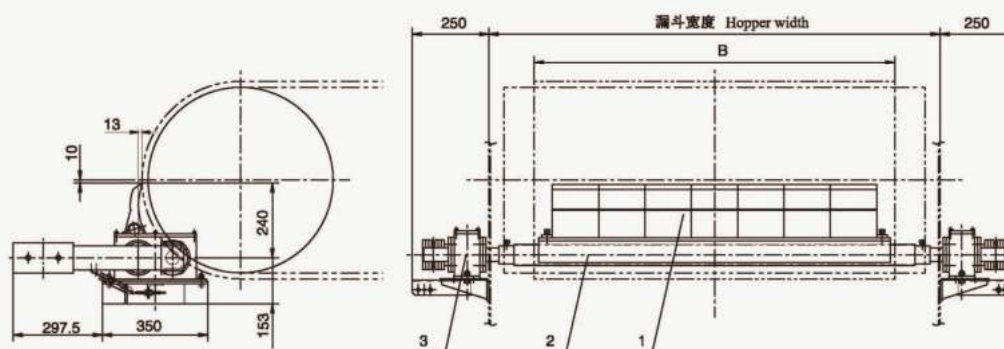
配重清扫器刀片采用耐磨聚氨酯材料，张紧器的功能采用配重块来实现，张紧力可调节。

Blades of spring cleaner use wear-resistant polyurethane materials, function of tensioner is realized using counter weights, tension force can be adjusted.

环保、新型、高效 Environment friendly, Latest model, high efficiency

一级配重清扫器PZQI外形、技术参数

Level I Counter Weighted Cleaner PZQI appearance and technical parameters



1—清扫刮板 2—刮板支架 3—张紧器

1— Cleaner scraper 2— Scraper support 3— Tensioner

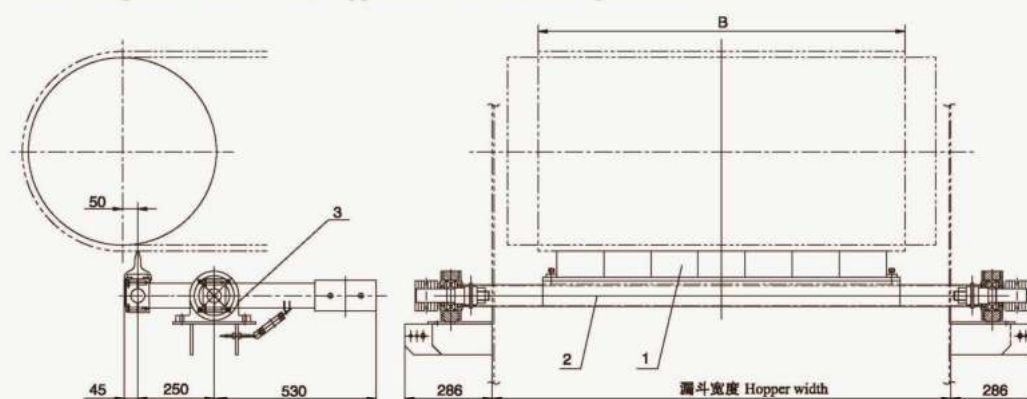
带宽B Belt Width B	一级弹簧清扫器型号 Level I Spring Cleaner Model	质量kg Weight kg	漏斗宽度 Hopper Width	带宽B Belt Width B	一级弹簧清扫器型号 Level I Spring Cleaner Model	质量kg Weight kg	漏斗宽度 Hopper Width
800	TS-PZQI 80	60	顾客提供 Supplied by customer	1600	TS-PZQI 160	80	顾客提供 Supplied by customer
1000	TS-PZQI 100	65		1800	TS-PZQI 180	85	
1200	TS-PZQI 120	70		2000	TS-PZQI 200	90	
1400	TS-PZQI 140	75		2200	TS-PZQI 220	95	

注：宁波探索公司可根据顾客要求设计、制造各类非标清扫器

Note: Ningbo TANSUO Machine Manufacturing Co.,Ltd can design and manufacture all kinds of non-standard cleaners according to the customer requirements.

二级配重清扫器PZQII外形、技术参数

Level II Counter Weighted Cleaner PZQII appearance and technical parameters



1—清扫刮板 2—刮板支架 3—张紧器

1— Scraper cleaner 2— Scraper support 3— Tensioner

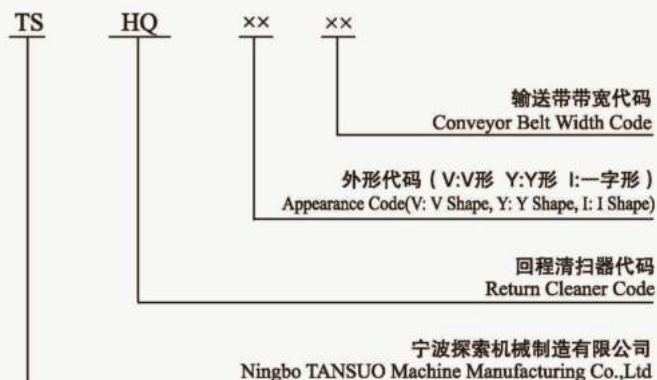
带宽B Belt Width B	一级弹簧清扫器型号 Level I Spring Cleaner Model	质量kg Weight kg	漏斗宽度 Hopper Width	带宽B Belt Width B	一级弹簧清扫器型号 Level I Spring Cleaner Model	质量kg Weight kg	漏斗宽度 Hopper Width
800	TS-PZQII 80	60	顾客提供 Supplied by customer	1600	TS-PZQII 160	80	顾客提供 Supplied by customer
1000	TS-PZQII 100	65		1800	TS-PZQII 180	85	
1200	TS-PZQII 120	70		2000	TS-PZQII 200	90	
1400	TS-PZQII 140	75		2200	TS-PZQII 220	95	

注：宁波探索公司可根据顾客要求设计、制造各类非标清扫器

Note: Ningbo TANSUO Machine Manufacturing Co.,Ltd can design and manufacture all kinds of non-standard cleaners according to the customer requirements.

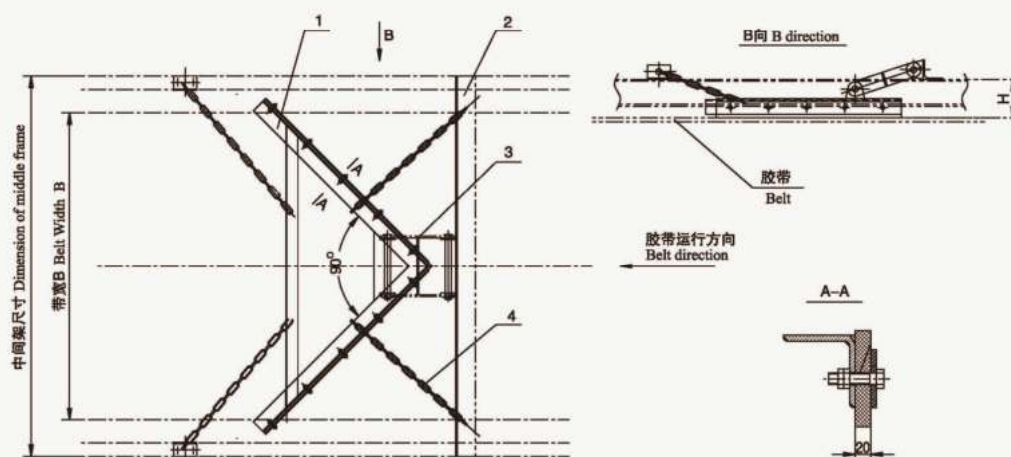
4.3 回程清扫器
4.3 Return Cleaner

回程清扫器选用说明
Return Cleaner Selection Descriptions



- 回程清扫器刀片采用耐磨聚氨酯材料，回程清扫器刀片与胶带的接触压力靠自重来实现。
- Blades of return cleaner use wear-resistant polyurethane materials, the contact pressure between blades of return cleaner and belt is realized using self-weight.

回程清扫器HQV外形、技术参数
Return Cleaner HQV appearance and technical parameters



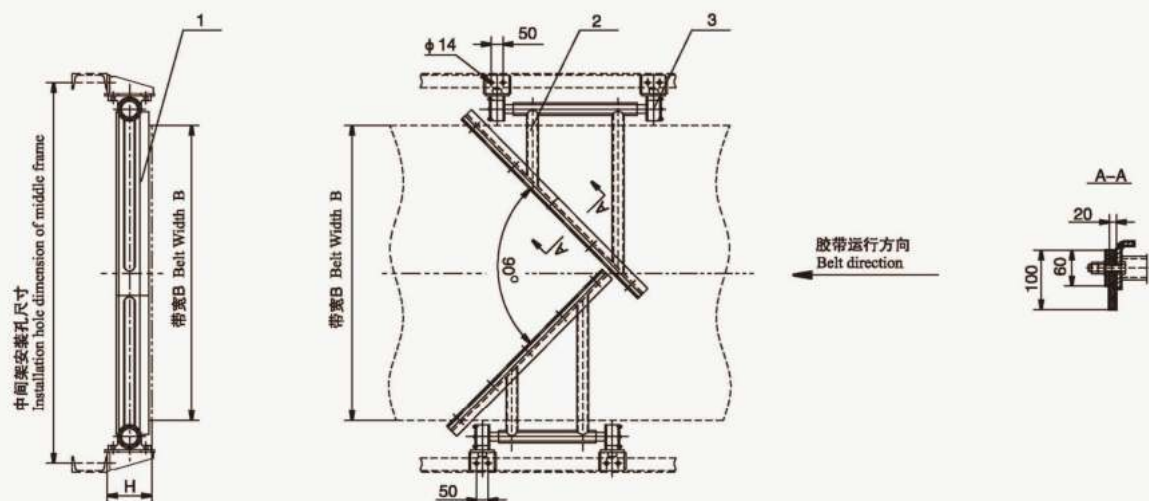
带宽B Belt Width B	一级弹簧清扫器型号 Level I Spring Cleaner Model	质量kg Weight kg	漏斗宽度 Hopper Width	带宽B Belt Width B	一级弹簧清扫器型号 Level I Spring Cleaner Model	质量kg Weight kg	漏斗宽度 Hopper Width
800	TS-HQV 80	45	顾客提供 Supplied by customer	1600	TS-HQV 160	70	顾客提供 Supplied by customer
1000	TS-HQV 100	50		1800	TS-HQV 180	75	
1200	TS-HQV 120	55		2000	TS-HQV 200	80	
1400	TS-HQV 140	60		2200	TS-HQV 220	85	

注：宁波探索公司可根据客户要求设计、制造各类非标清扫器

Note: Ningbo TANSUO Machine Manufacturing Co.,Ltd can design and manufacture all kinds of non-standard cleaners according to the customer requirements.

回程清扫器HQY外形、技术参数

Return Cleaner HQY appearance and technical parameters



1—清扫刮板 2—刮板支架 3—转动座

1—Cleaner scraper 2—Scraper support 3—Rotating Base

带宽B Belt Width B	一级弹簧清扫器型号 Level I Spring Cleaner Model	质量kg Weight kg	漏斗宽度 Hopper Width	带宽B Belt Width B	一级弹簧清扫器型号 Level I Spring Cleaner Model	质量kg Weight kg	漏斗宽度 Hopper Width
800	TS-HQY 80	45	顾客提供 Supplied by customer	1600	TS- HQY 160	70	顾客提供 Supplied by customer
1000	TS- HQY 100	50		1800	TS- HQY 180	75	
1200	TS- HQY120	55		2000	TS- HQY 200	80	
1400	TS- HQY140	60		2200	TS- HQY 220	85	

注：宁波探索公司可根据顾客要求设计、制造各类非标清扫器

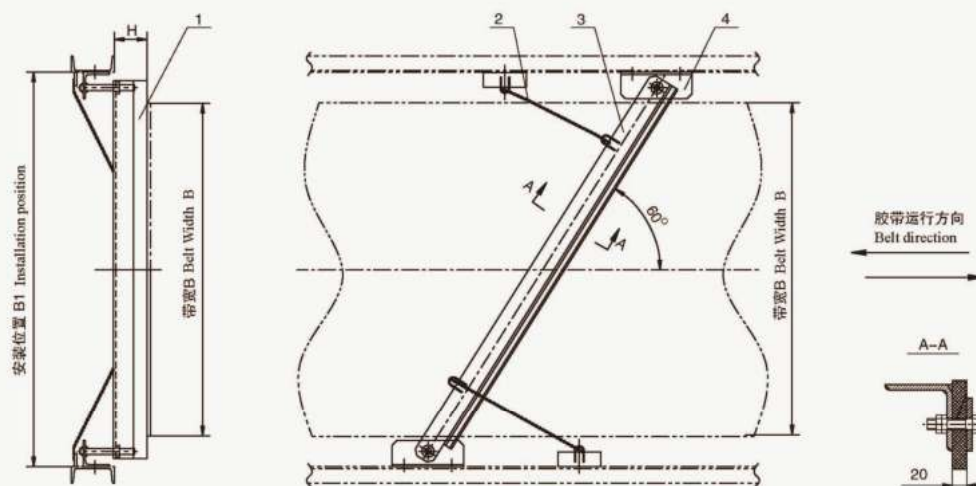
Note: Ningbo TANSUO Machine Manufacturing Co.,Ltd can design and manufacture all kinds of non-standard cleaners according to the customer requirements.

回程清扫器HQI外形、技术参数

Return Cleaner HQI appearance and technical parameters

回程清扫器HQI适用于双向运行输送机

Return Cleaner HQI suitable for two-way operation conveyor



1—清扫刮板 2—吊链 3—刮板架 4—支座

1—Cleaner scraper 2—Sling chain 3—Scraper support 4—Support

带宽B Belt Width B	一级弹簧清扫器型号 Level I Spring Cleaner Model	质量kg Weight kg	漏斗宽度 Hopper Width	带宽B Belt Width B	一级弹簧清扫器型号 Level I Spring Cleaner Model	质量kg Weight kg	漏斗宽度 Hopper Width
800	TS-HQI 80	27	顾客提供 Supplied by customer	1600	TS- HQI 160	40	顾客提供 Supplied by customer
1000	TS- HQI 100	30		1800	TS- HQI 180	44	
1200	TS- HQI 120	33		2000	TS- HQI 200	48	
1400	TS- HQI 140	36		2200	TS- HQI 220	52	

注：宁波探索公司可根据顾客要求设计、制造各类非标清扫器

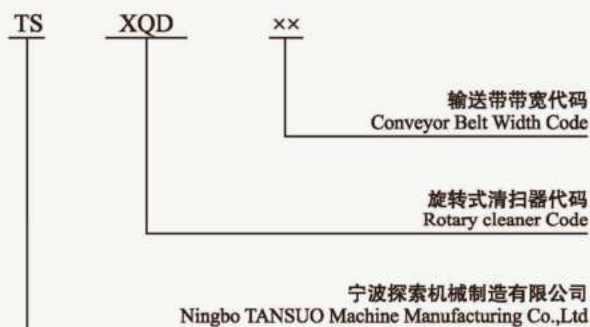
Note: Ningbo TANSUO Machine Manufacturing Co.,Ltd can design and manufacture all kinds of non-standard cleaners according to the customer requirements.

4.4 旋转式清扫器

4.4 Rotary Cleaners

旋转式清扫器选用说明

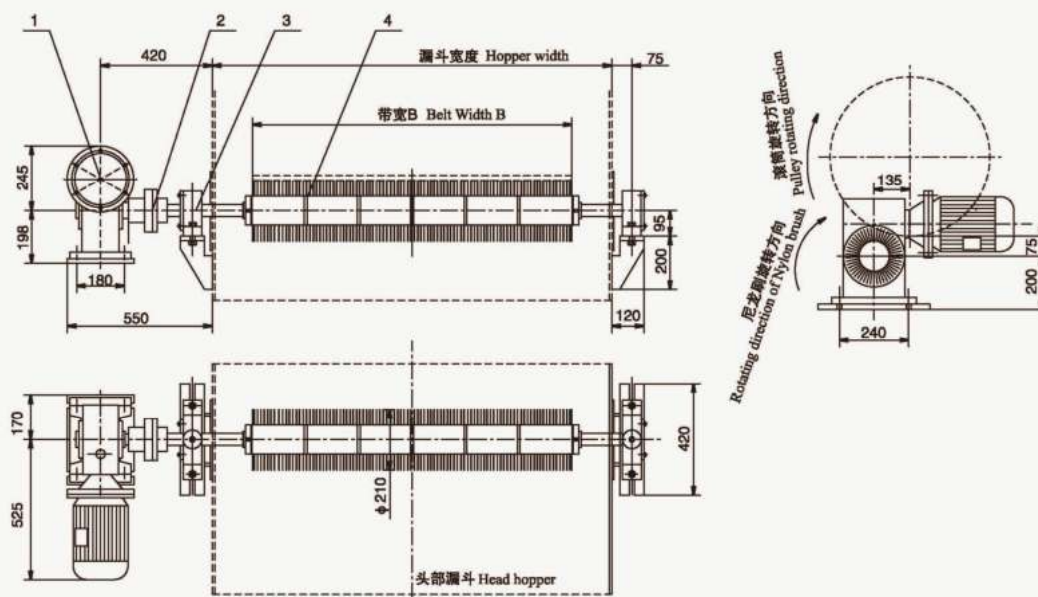
Rotary Cleaner Selection Descriptions



- 旋转式清扫器置于输送机回程输送带下，由电动机驱动圆柱形尼龙刷，刷尖与输送带轻微接触，尼龙刷的旋转方向与回程输送带的运行方向相反，从而将粘附在输送带上的微粒物料刷下，并落入卸料斗中。
- Rotary cleaner is placed under the return belt of conveyor, cylindrical nylon brush is driven by the motor, brush tip touches conveyer belt, the nylon brush's direction and returning conveyer belt's operating direction are in opposite way. Thus the particles material that attached to belt will be brushed off, and fall into the discharge hopper.

旋转式清扫器XQD外形、技术参数

Rotary Cleaner XQD appearance and technical parameters



1—减速电机 2—联轴器 3—支承座 4—尼龙转刷

1— Geared Motor 2— Coupling 3— Bearing Seat 4— Nylon brush

带宽B Belt Width B	一级弹簧清扫器型号 Level I Spring Cleaner Model	质量kg Weight kg	漏斗宽度 Hopper Width	带宽B Belt Width B	一级弹簧清扫器型号 Level I Spring Cleaner Model	质量kg Weight kg	漏斗宽度 Hopper Width
800	TS-XQD 80	95	顾客提供 Supplied by customer	1600	TS- XQD 160	115	顾客提供 Supplied by customer
1000	TS- XQD 100	100		1800	TS- XQD 180	120	
1200	TS- XQD 120	105		2000	TS- XQD 200	125	
1400	TS- XQD 140	110		2200	TS- XQD 220	130	

注：宁波探索公司可根据顾客要求设计、制造各类非标清扫器

Note: Ningbo TANSUO Machine Manufacturing Co.,Ltd can design and manufacture all kinds of non-standard cleaners according to the customer requirements.

排水、吸水、犁雪装置

Drainage, Wiping, and Snow Plow Device

1.概述 Overview

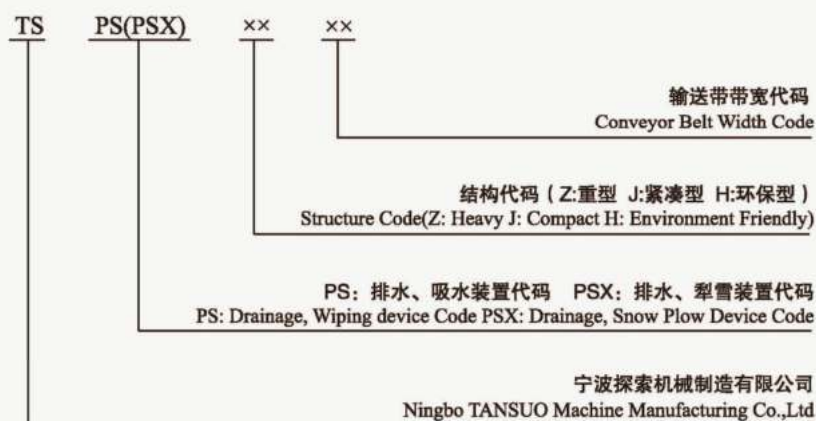
- 露天使用的带式输送系统，如遇雨天、雪天，在停机状态下其槽形胶带面将有大量积水、积雪，选用设计合理的排水、吸水、犁雪装置可以有效去除输送带上的大量积水、积雪，保证输送系统的正常运行。
- For belt conveyor system that used in open area, if facing rain or snow condition, its trough belt surface will have a lot of water or snow when the system is not operating. Selecting reasonably designed drainage, wiping, and snow plow device can effectively remove water and snow from the conveyor belt, and ensures the normal operation of the conveying system.

2.宁波探索排水、吸水、犁雪装置的设计理念

Design concept of Drainage, Wiping, and Snow Plow Device in Ningbo TANSUO

- 2.1 设计多类型排水、吸水、犁雪装置以满足不同工况使用要求。
- 2.2 排水、吸水、犁雪装置与原有输送系统承载托辊可以配套使用。
- 2.3 排水、犁雪装置V形刮刀具有耐磨、不损坏胶带等特点。
- 2.4 排水、吸水、犁雪装置安装维护简便，排水、犁雪效果极佳。
- 2.1 Multiple Designs of Drainage, Wiping, and Snow Plow Device are available to meet different usage conditions and requirements
- 2.2 Drainage, Wiping, and Snow Plow Device should be used with the carrying idler of the original conveyer system
- 2.3 V-shape Scraper on Drainage, Wiping, and Snow Plow Device should include feature such as wear-resistance and will not cause damage to the belt.
- 2.4 Drainage, Wiping, and Snow Plow Device should be easy to install and maintain, with excellent water draining and snow plowing ability.

3.排水装置选型说明 Selection Description of Drainage Device



■ 4. 排水、犁雪装置类型 Type of Drainage, Snow Plow Device

- 4.1 重型排水装置PSZ
- 4.1 Heavy Drainage Device PSZ

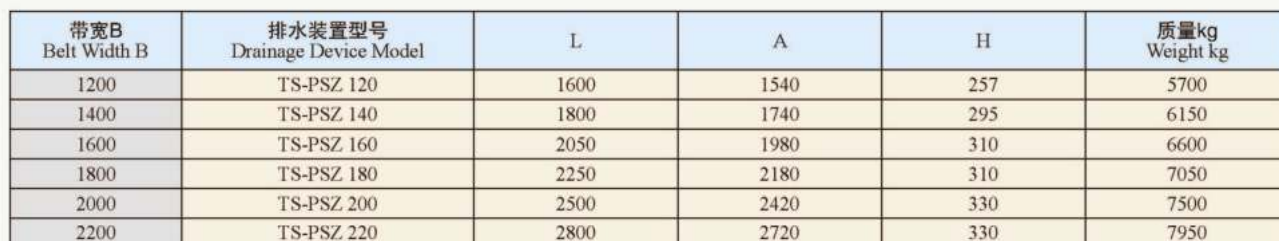
结构: Structure:

- 重型排水装置PSZ由刮板、刮板升降装置、旋转托辊组、平托辊组、挡辊组、电动推杆、连杆装置、转动臂等部件组成。
- Heavy Drainage Device PSZ is made up with components such as scraper, scraper lifting device, rotating idler, flat idler, guide idler, electric push rod, connecting rod device, and the rotor arm, etc.

工作原理: Operating Principle:

- 在露天输送系统的某一区域,通过排水装置的工作,使该区域的槽形胶带面反压成倒槽形,这样就能将胶带面上大部分积水自由排除,然后只要启动输送机,把远方积水带到排水点,由排水装置上的V形刮板全部排除到固定集水槽内,最终集中收集到污水池内。
- In the certain area of an open air conveying system, water drainage task is completed through drainage device, it turns the trough belt of that area into an inverse trough shape, so that most of the water on the belt can be drained. After starting the conveyor, the distant water will be transported to a drainage point, and will be drained via V-shape scraper of drainage device to the fixed sink, and ultimately leads to the centralized sewage pool.

Heavy Drainage Device PSZ appearance and technical parameters



Note: Ningbo TANSUO Machine Manufacturing Co.,Ltd can design and manufacture all kinds of non-standard cleaners according to the customer requirements.

4.2 Environmental Friendly Centralized Wiping Device PSH

结构: Structure:

- 环保型集中吸水装置PSH由排水总成、无堵塞泵、射流泵、水箱、污水溢流管、吸水头、旋转机构、电动推杆等部件组成。
- Environmental Friendly Centralized Wiping Device is made up with components such as assy tube-drain, non-clogged pumps, jet pump, water tank, sewage overflow pipe, suction head, rotary mechanism and electric push rod, etc.

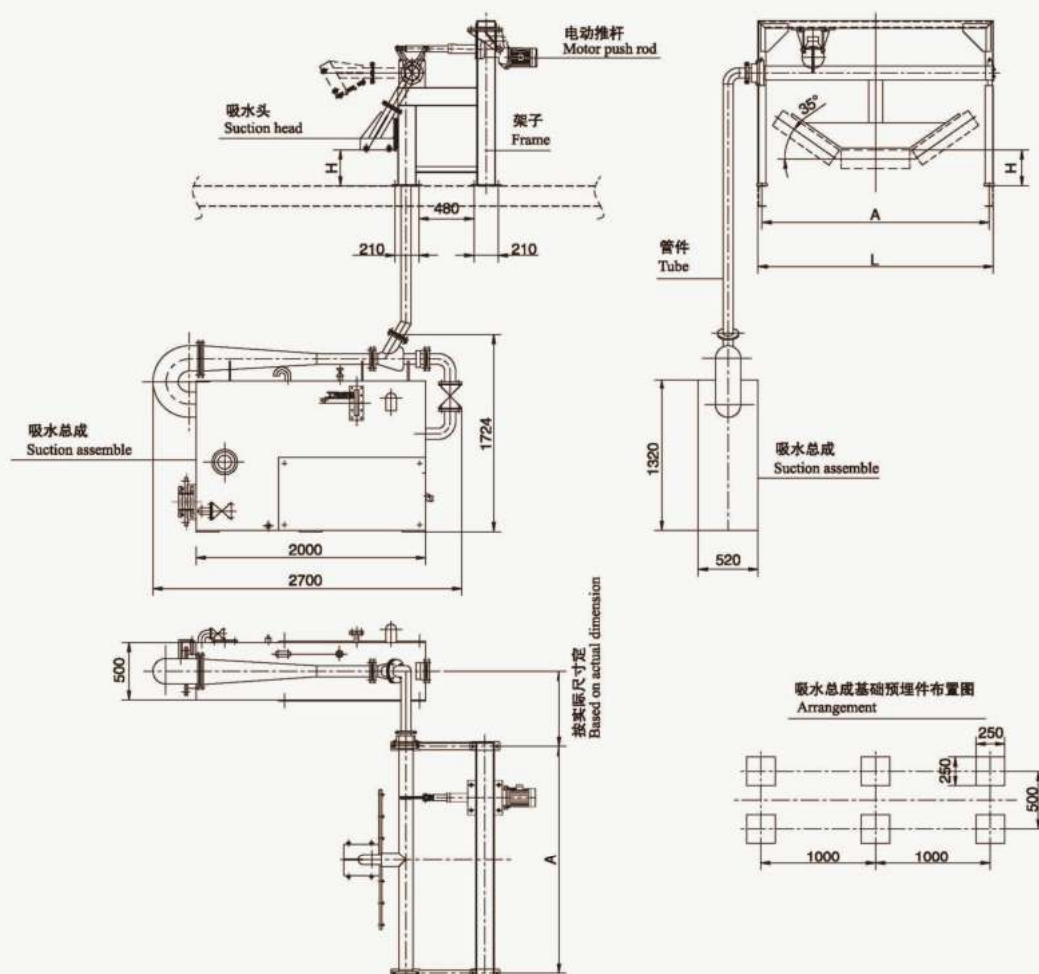
工作原理: Operating Principle:

- 环保型集中吸水装置PSH工作时用电动推杆将吸水头下降至吸水面，通过吸水头对露天输送系统胶带面上的积水进行吸取（胶带上剩余积水可通过启动输送机，把远方的积水带到吸水点），经过排水总成将胶带上的污水通过管道集中排放至污水沟及污水池内。

- Environmental Friendly Centralized Wiping Device PSH completes the suction process by using the electric push rod pushing down the suction head to the water surface. Water on the belt of open air conveying system is discharged through the suction head. (The residual water on the belt can be transported to the suction point through conveying system), and finally water is discharged through assy tube-drain and pipeline to the sink and sewage pool.

环保型排水装置PSH外形、技术参数

Environmental Friendly Centralized Suction Device PSH appearance and technical parameters



注：排水总成水箱可以放到栈桥下，或其他安全区域，也可放在输送机中间架边上。

Note: Drainage assembly tank can be placed under a trestle, or other secured area, or placed on the frame edge of the conveyor.

带宽B Belt Width B	排水装置型号 Drainage Device Model	L	A	H	质量kg Weight kg
1200	TS-PSH 120	1600	1540	257	2800
1400	TS-PSH 140	1800	1740	295	2900
1600	TS-PSH 160	2050	1980	310	3000
1800	TS-PSH 180	2250	2180	310	3200
2000	TS-PSH 200	2500	2420	330	3400
2200	TS-PSH 220	2800	2720	330	3600

注：宁波探索公司可根据客户要求设计、制造各类非标清扫器

Note: Ningbo TANSUO Machine Manufacturing Co.,Ltd can design and manufacture all kinds of non-standard cleaners according to the customer requirements.

4.3 紧凑型排水、犁雪装置PSXJ

4.3 Compact Drainage, Snow Plow Device (PSXJ)

结构: Structure:

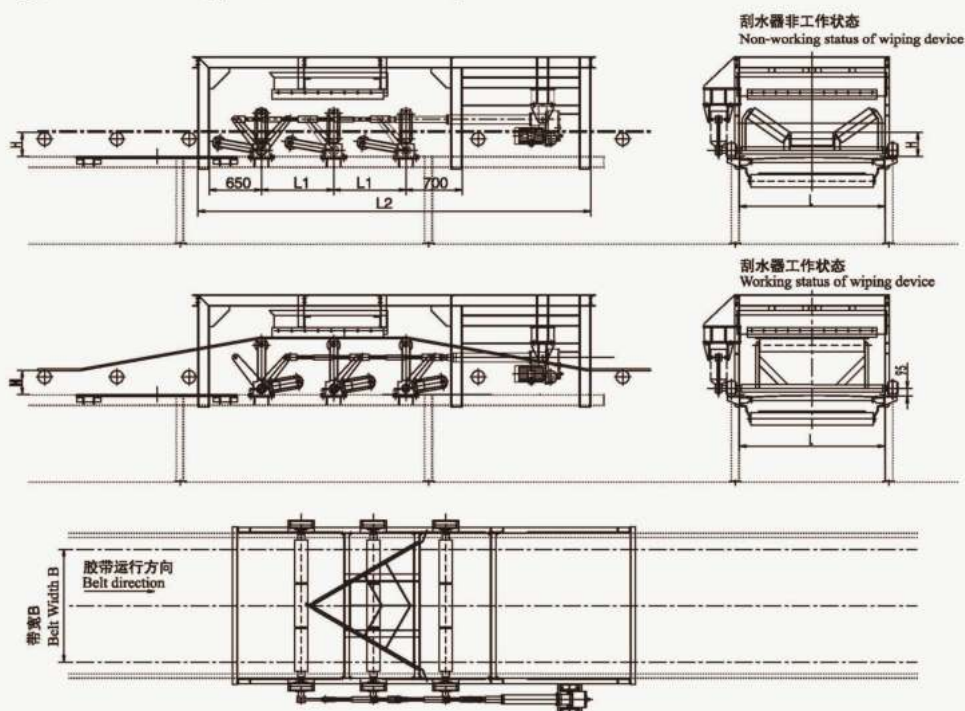
- 紧凑型排水、犁雪装置PSXJ由刮板、刮板架、组合托辊、电动推杆、连杆装置、转动臂等部件组成。
- Compact Drainage, Snow Plow Device PSXJ is made up with components such as the scraper, the scraper frame, combination idler, electric push rod, connecting rod device and the rotor arm, etc.

工作原理: Operating Principle:

- 紧凑型排水、犁雪装置PSXJ仅占用露天输送系统的很小区域, 通过电动推杆、组合托辊作用, 使该区域的槽形胶带面升高变成平形刮水、刮雪区域, 然后启动输送机, 由V形刮板将胶带面上的积水、积雪全部排除。
- Compact Drainage, Snow Plow Device PSXJ occupies only a small area of the open conveying system. Through the use of electric push rod and combination idler, the area of the trough belt surface rise into a flat wiping, Scraping snow area, and then after starting the conveyor, water and snow on the belt surface will be removed by V-Shape scraper.

紧凑型排水装置PSXJ外形、技术参数

Compact Drainage, Device PSXJ appearance and technical parameters



带宽B Belt Width B	排水装置型号 Drainage Device Model	L	A	H	L1	L2	质量kg Weight kg
1200	TS-PSXJ 120	1600	1540	257	850	4790	1900
1400	TS-PSXJ 140	1800	1740	295	900	4890	2100
1600	TS-PSXJ 160	2050	1980	310	950	4990	2400
1800	TS-PSXJ 180	2250	2180	310	1000	5090	2700
2000	TS-PSXJ 200	2500	2420	330	1050	5190	3100
2200	TS-PSXJ 220	2800	2720	330	1100	5290	3500

注: 宁波探索公司可根据顾客要求设计、制造各类非标清扫器

Note: Ningbo TANSUO Machine Manufacturing Co., Ltd can design and manufacture all kinds of non-standard cleaners according to the customer requirements.

缓冲装置 Cushioning Device

■ 1.概述 Overview

- 缓冲装置是一种装在输送机皮带运料处的多层的减震、缓冲产品，多用于散装物料输送系统。
- Cushioning device is a multilayer damping and buffing product that used on the transport part of conveyor belts. It mainly used in the bulk material conveying system.

■ 2.宁波探索缓冲装置的设计理念 Design concept of cushioning device in Ningbo TANSUO

- 2.1 设计多种类型缓冲装置以满足不同工况使用要求。
- 2.2 缓冲装置应配合输送带材料、转运物料和工况实际要求。
- 2.3 缓冲装置应减少物料冲击对胶带的损坏。
- 2.4 缓冲装置应简化安装、维护。
- 2.1 Multiple Designs of cushioning device are available to meet different usage conditions and requirements
- 2.2 Cushioning device should match up with the conveyor belt material, transport material and actual usage conditions and requirements.
- 2.3 Cushioning device should reduce damage of rubber belt from the material impact.
- 2.4 Cushioning device should be easy to install and maintain.

■ 3.宁波探索缓冲装置的特点 Characteristics of the Cushioning device from Ningbo TANSUO

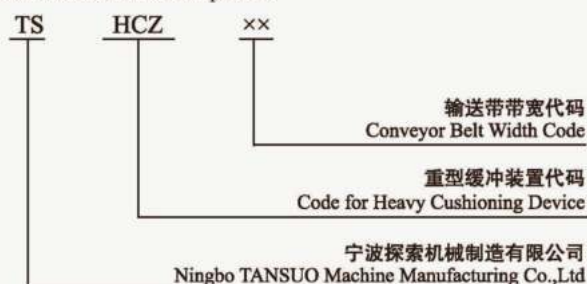
- 3.1 具有多样化的缓冲装置，具有不同的缓冲功能。
- 3.2 缓冲装置的缓冲条的支撑层采用进口超高分子量聚乙烯材料，使输送带运行时的摩擦阻力降到最低，支撑层采用弧形结构设计可以保证输送带的运行顺滑流畅。
- 3.3 缓冲装置的缓冲条的减震层采用高弹性特种橡胶，能够最大限度地吸收物料对胶带的冲击力。
- 3.4 缓冲装置采用高强度支撑结构，以满足不同物料的冲击力。
- 3.5 缓冲装置具有防撕裂功能。
- 3.1 Diversified cushioning device, have different buffer function.
- 3.2 Support layer of the buffer strip in the cushioning device uses imported ultra-high molecular weight polyethylene material. By using this material, it reduces the conveyor belt frictional resistance to a minimum level; the arc structure design in the support layer ensures smooth operation of the conveyor belt.
- 3.3 Shock absorption layer of the buffer strip in the cushioning device uses high elastic special rubber. By using this special rubber, it maximizes the impact absorption from the material.
- 3.4 Cushioning device adopts high strength support structure, to meet the different material impact.
- 3.5 Cushioning device with anti-tear function

■ 4.缓冲装置类型 Cushioning device Type

- 4.1 重型缓冲装置HCZ
- 4.1 Heavy Cushioning device (HCZ)

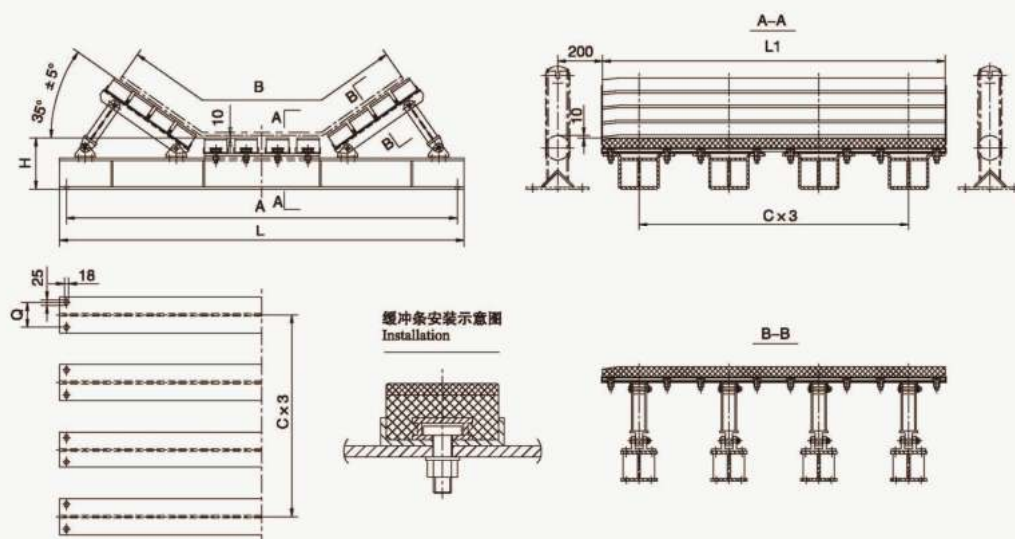
缓冲装置选用说明

Cushioning device selection descriptions:



重型缓冲装置HCZ外形、技术参数

Heavy Cushioning Device (HCZ) appearance and technical parameters:



带宽B Belt Width B	排水装置型号 Drainage Device Model	L	A	H	Q	C	L1	质量kg Weight kg
1200	TS-HCZ 120	1600	1540	247	110	400	1524	1550
1400	TS- HCZ 140	1800	1740	285	110	400	1524	1650
1600	TS- HCZ 160	2050	1980	300	110	400	1600	1850
1800	TS- HCZ 180	2250	2180	300	110	400	1600	1950
2000	TS- HCZ 200	2500	2420	320	120	450	1800	2150
2200	TS- HCZ 220	2800	2720	320	120	450	1800	2250

注：宁波探索公司可根据顾客要求设计、制造各类非标清扫器

Note: Ningbo TANSUO Machine Manufacturing Co.,Ltd can design and manufacture all kinds of non-standard cleaners according to the customer requirements.

- 4.2 可变槽角缓冲装置HCB
- 4.2 Variable trough Angle Cushioning Device (HCB)

防撕裂、防冲击 Anti-Tear, Impact Resistant

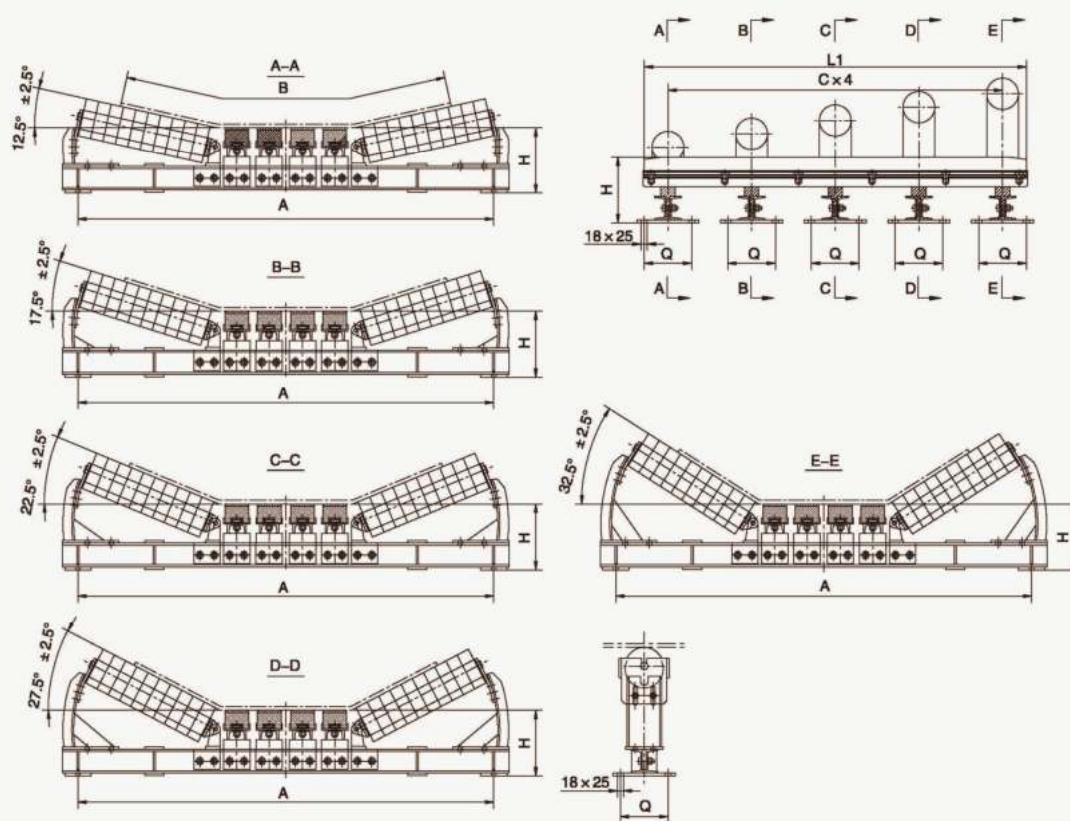
缓冲装置选用说明

Cushioning device selection descriptions:



可变槽角缓冲装置HCB外形、技术参数

Variable Trough Angle Cushioning Device (HCB) appearance and technical parameters:



带宽B Belt Width B	排水装置型号 Drainage Device Model	L	A	H	Q	C	L1	质量kg Weight kg
1200	TS-HCB 120	1540	257	200	350	1600	1650	1550
1400	TS- HCB 140	1740	295	200	350	1600	1750	1650
1600	TS- HCB 160	1980	310	220	350	1600	2000	1850
1800	TS- HCB 180	2180	310	220	350	1600	2200	1950
2000	TS- HCB 200	2420	330	240	375	1800	2450	2150
2200	TS- HCB 220	2720	330	240	375	1800	2650	2250

注：宁波探索公司可根据客户要求设计、制造各类非标清扫器

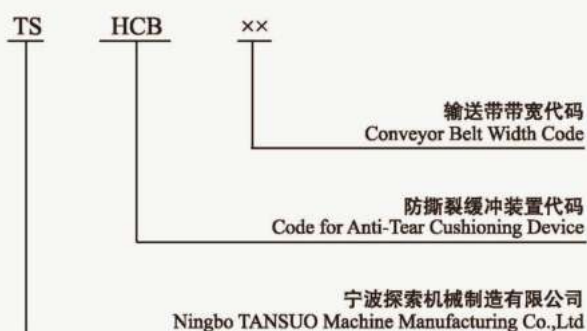
Note: Ningbo TANSUO Machine Manufacturing Co.,Ltd can design and manufacture all kinds of non-standard cleaners according to the customer requirements.

4.3 防撕裂缓冲装置HCF

4.3 Cushioning device selection descriptions:

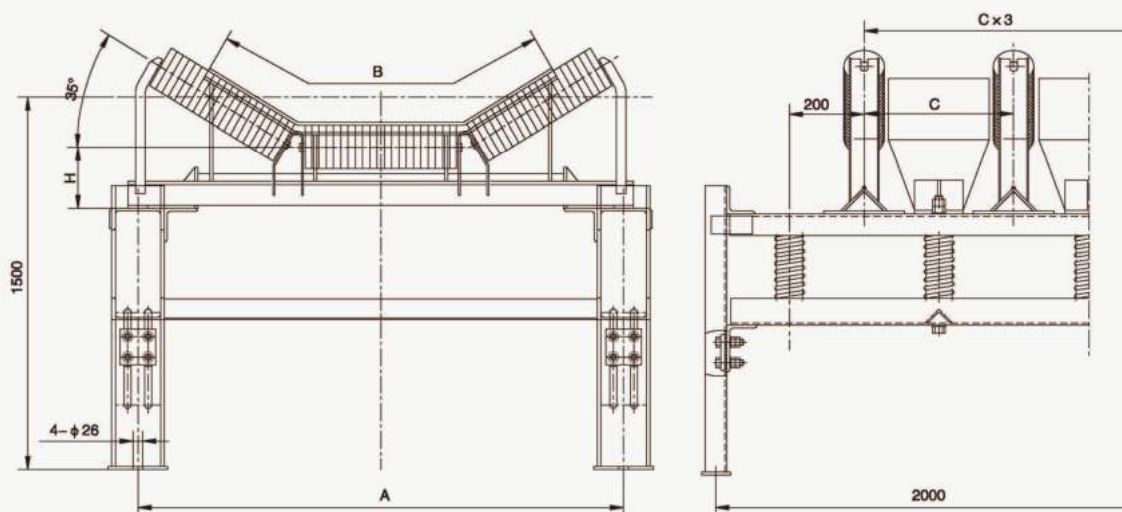
缓冲装置选用说明

Cushioning device selection descriptions:



防撕裂缓冲装置HCF外形、技术参数

Anti-Tear Cushioning Device (HCF) appearance and technical parameters:



带宽B Belt Width B	排水装置型号 Drainage Device Model	L	A	H	质量kg Weight kg
1200	TS-HCF 120	1540	257	400	1350
1400	TS-HCF 140	1740	295	400	1450
1600	TS-HCF 160	1980	310	400	1650
1800	TS-HCF 180	2180	310	400	1800
2000	TS-HCF 200	2420	330	400	2000
2200	TS-HCF 220	2720	330	400	2200

注：宁波探索公司可根据客户要求设计、制造各类非标清扫器

Note: Ningbo TANSUO Machine Manufacturing Co.,Ltd can design and manufacture all kinds of non-standard cleaners according to the customer requirements.

调心托辊 Aligning Idler

1. 概述 Overview

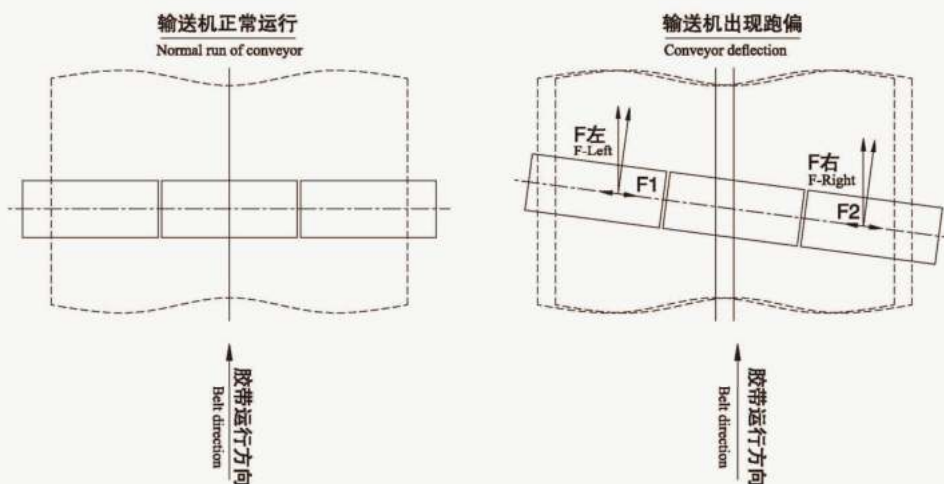
- 选用设计合理的调心托辊可以有效解决带式输送系统的跑偏问题。
- Off tracking problem in belt conveyor can be resolved by using carefully designed aligning idler.

2. 宁波探索调心托辊的设计理念 Design concept of aligning idler in Ningbo TANSUO

- 2.1 设计多类型调心托辊以满足不同工况使用要求。
- 2.2 调心托辊与原有输送系统承载、回程托辊可以配套使用。
- 2.3 调心托辊结构设计合理、运行可靠。
- 2.4 调心托辊安装维护简便，纠偏效果极佳。
- 2.1 Multiple Designs of aligning idler are available to meet different usage conditions and requirements.
- 2.2 Aligning idler should be used with the carrying and return idler of the original conveyer system.
- 2.3 Aligning idler should be professional designed and operates reliably.
- 2.4 Aligning idler should be easy to install and maintain, with excellent rectification ability.

3. 调心托辊工作原理 Operating Principle of Aligning Idler

- 调心托辊工作原理：输送机出现跑偏时，调心托辊转动一定的角度，使托辊轴线与胶带中心线不垂直，胶带与辊子产生相对滑动，辊子两侧产生摩擦力 $F_{左}$ 、 $F_{右}$ ，当胶带往托辊左侧跑偏时，辊子中心左侧的摩擦力 $F_{左} > F_{右}$ ，此时使胶带往右滑动的力 $F_1 > F_2$ ，使往左跑偏的胶带向右滑动，直至 $F_1 = F_2$ ，胶带恢复至中心位置，从而起到调心效果。
- Operating Principle of Aligning Idler: When the off tracking problem occurs in belt conveyor the aligning idler rotates a certain angle, so that the shaft line of roller is not perpendicular to the center line of rubber belt. It induces relative sliding between the rubber belt and the roller. Friction forces (F_{left}) and (F_{right}) are produced on two sides of roller, when rubber belt slides toward left side of roller, Friction (F_{left}) from the left side of roller $>$ Friction (F_{right}) from right side of roller carrier. At the same time, the force that push rubber belt to the right (F_1) $>$ the force that push rubber belt to the left (F_2). This will help the left sliding rubber belt moving towards right until $F_1 = F_2$. So that the rubber belt will recover to the center position, thus it acts as a aligning effect.

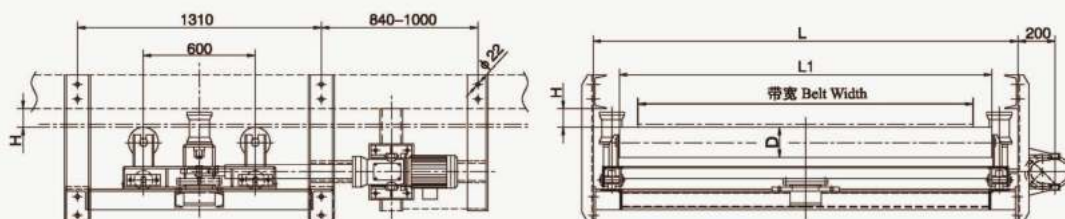
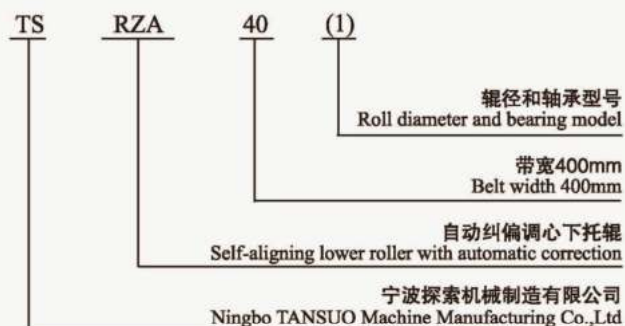


4. 调心托辊类型 Aligning idler type

- 宁波探索公司结合国内外先进理念，设计了多种类型的调心托辊供顾客参考、选用。
- Ningbo TANSUO Machine Manufacturing Co.,Ltd combined with the domestic and international advanced concept; multiple designs of aligning idlers are available for customer to choose from.
- 自动纠偏调心下托辊
- Self-Aligning Lower Idler

标记方法

Labeling method:



带宽 Belt Width	型号 Model	辊子 Roller			轴承型号 Bearing Model	L	H	重量 (kg) Weight(kg)
		辊子型号 Roller Model	D	L1				
800	TS- RZA -80-1	CR -89-204-950	89	950	204	1142	144.5	200
	TS- RZA -80-2	CR -108-205-950	108	950	205	1142	154	210
900	TS-RZA -90	CR -114.3-305-1000	114.3	1000	305	1240	154	215
1000	TS-RZA -100-1	CR -108-305-1150	108	1150	305	1342	164	220
	TS-RZA -100-2	CR -133-305-1150	133	1150	305	1342	176.5	235
1050	TS-RZA -105	CR -139.8-305-1150	139.8	1150	305	1390	174	240
1200	TS-RZA -120-1	CR -108-305-1400	108	1400	305	1592	174	250
	TS-RZA -120-2	CR -133-305-1400	133	1400	305	1592	186.5	260
	TS-RZA -120-3	CR -133-306-1400	133	1400	306	1592	186.5	270
	TS-RZA -120-4	CR -139.8-305-1300	139.8	1300	305	1540	199.5	260
	TS-RZA -120-5	CR -139.8-306-1300	139.8	1300	306	1540	199.5	270
	TS-RZA -120-6	CR -159-305-1400	159	1400	305	1592	199.5	280
	TS-RZA -120-7	CR -159-306-1400	159	1400	306	1592	199.5	290
1400	TS-RZA -140-1	CR -108-305-1600	108	1600	305	1800	184	260
	TS-RZA -140-2	CR -133-305-1600	133	1600	305	1800	196.5	270
	TS-RZA -140-3	CR -133-306-1600	133	1600	306	1800	196.5	280
	TS-RZA -140-4	CR -159-305-1600	159	1600	305	1800	209.5	270
	TS-RZA -140-5	CR -159-306-1600	159	1600	306	1800	209.5	280
	TS-RZA -140-6	CR -165.2-305-1530	165.2	1530	305	1790	160	270
	TS-RZA -140-7	CR -165.2-306-1530	165.2	1530	306	1790	160	280

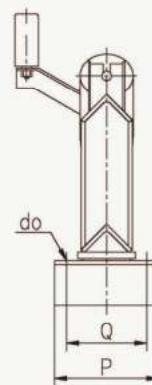
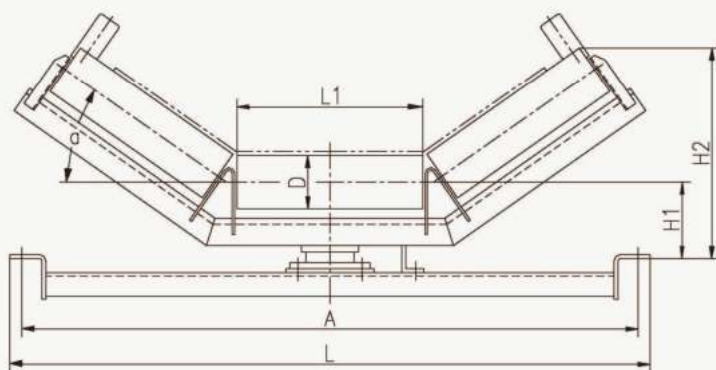
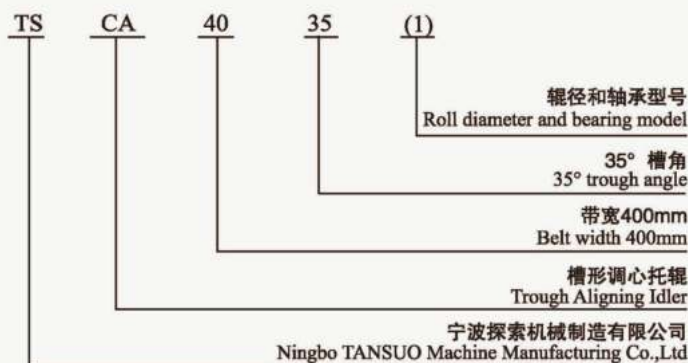
- 自动纠偏调心下托辊
- Self-Aligning Lower Idler

带宽 Belt Width	型号 Model	辊子 Roller			轴承型号 Bearing Model	L	H	重量 (kg) Weight(kg)
		辊子型号 Roller Model	D	L1				
1600	TS-RZA -160-1	CR-133-305-1800	133	1800	305	2050	100	380
	TS-RZA -160-2	CR-133-306-1800	133	1800	306	2050	100	390
	TS-RZA -160-3	CR-159-306-1800	159	1800	306	2050	100	400
	TS-RZA -160-4	CR-159-308-1800	159	1800	308	2050	100	410
	TS-RZA -160-5	CR-165.2-306-1730	165.2	1730	306	1990	160	400
	TS-RZA -160-6	CR-165.2-308-1730	165.2	1730	308	1990	160	410
1800	TS-RZA -180-1	CR-133-305-2000	133	2000	305	2250	100	420
	TS-RZA -180-2	CR-133-306-2000	133	2000	306	2250	100	430
	TS-RZA -180-3	CR-159-306-2000	159	2000	306	2250	100	430
	TS-RZA -180-4	CR-159-308-2000	159	2000	308	2250	100	440
	TS-RZA -180-5	CR-165.2-306-2000	165.2	2000	306	2280	160	440
	TS-RZA -180-6	CR-165.2-308-2000	165.2	2000	308	2280	160	450
2000	TS-RZA -200-1	CR-159-306-2200	159	2200	306	2500	100	470
	TS-RZA -200-2	CR-159-308-2200	159	2200	308	2500	100	490
	TS-RZA -200-3	CR-165.2-306-2200	165.2	2200	306	2480	160	490
	TS-RZA -200-4	CR-165.2-308-2200	165.2	2200	308	2480	160	510
	TS-RZA -200-5	CR-194-308-2200	194	2200	308	2500	147	540
	TS-RZA -200-6	CR-194-310-2200	194	2200	310	2500	147	560
2200	TS-RZA -220-1	CR-159-306-2400	159	2400	306	2800	100	490
	TS-RZA -220-2	CR-159-308-2400	159	2400	308	2800	100	510
	TS-RZA -220-3	CR-165.2-306-2400	165.2	2400	306	2800	133	530
	TS-RZA -220-4	CR-165.2-308-2400	165.2	2400	308	2800	133	550
	TS-RZA -220-5	CR-194-308-2400	194	2400	308	2800	147	580
	TS-RZA -220-6	CR-194-310-2400	194	2400	310	2800	147	600
2400	TS-RZA -240-1	CR-159-308-2800	159	2800	308	3110	100	510
	TS-RZA -240-2	CR-159-310-2800	159	2800	310	3110	100	530
	TS-RZA -240-3	CR-165.2-308-2800	165.2	2800	308	3110	160	550
	TS-RZA -240-4	CR-165.2-310-2800	165.2	2800	310	3110	160	570
	TS-RZA -240-5	CR-194-308-2800	194	2800	308	3110	117.5	600
	TS-RZA -240-6	CR-194-310-2800	194	2800	310	3110	117.5	620

- 槽形调心托辊
- Trough Aligning Idler

标记方法

Labeling method:



带宽 Belt Width	型号 Model	辊子 Roller			轴承 型号 Bearing Model	A	L	H ₁	H ₂		P	Q	d ₀	重量 (kg) Weight(kg)	
		辊子型号 Roller Model	D	L1					35°	45°				35°	45°
400	TS-CA-40	CR-89-204-145	89	145	204	640	690	125	256	276	190	140	M12	67	69
450	TS-CA-45	CR-89-204-165	89	165	204	690	740	125	267	290	190	140	M12	72	74
500	TS-CA-50	CR-89-204-200	89	200	204	740	800	135.5	300	328	170	130	M12	75	77
600	TS-CA-60	CR-89-204-210	89	210	204	840	890	140	308	337	200	150	M12	80	82
650	TS-CA-65	CR-89-204-250	89	250	204	890	950	135.5	330	370	170	130	M12	85	87
750	TS-CA-75	CR-114.3-205-265	114.3	265	205	1040	1090	150	363	398	210	160	M12	105	107
800	TS-CA-80-1	CR-89-204-315	89	315	204	1090	1150	135.5	370	410	170	130	M12	100	102
	TS-CA-80-2	CR-108-205-315	108	315	205	1090	1150	146	390	430	170	130	M12	105	107
900	TS-CA-90	CR-114.3-305-315	114.3	315	305	1190	1240	150	391	434	210	160	M12	110	112
1000	TS-CA-100-1	CR-108-305-380	108	315	305	1290	1350	159	440	490	220	170	M16	140	143
	TS-CA-100-2	CR-133-305-380	133	380	305	1290	1350	173.5	465	520	220	170	M16	150	153
1050	TS-CA-105	CR-139.8-305-370	139.8	370	305	1340	1390	180	467	516	230	180	M12	155	168
1200	TS-CA-120-1	CR-108-305-465	108	465	305	1540	1600	176	505	570	280	200	M16	155	158
	TS-CA-120-2	CR-133-305-465	133	465	305	1540	1600	190.5	530	592	280	200	M16	165	168
	TS-CA-120-3	CR-133-306-465	133	465	306	1540	1600	190.5	530	595	280	200	M16	170	178
	TS-CA-120-4	CR-139.8-305-420	139.8	420	305	1490	1540	207.5	495	551	280	180	M16	165	168
	TS-CA-120-5	CR-139.8-306-420	139.8	420	306	1490	1540	207.5	495	551	280	180	M16	170	173
	TS-CA-120-6	CR-159-305-465	159	465	305	1540	1600	207.5	660	618	280	200	M16	185	188
	TS-CA-120-7	CR-159-306-465	159	465	306	1540	1600	207.5	660	620	280	200	M16	200	203

自动纠偏 Automatic correction



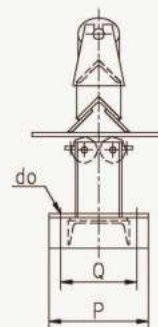
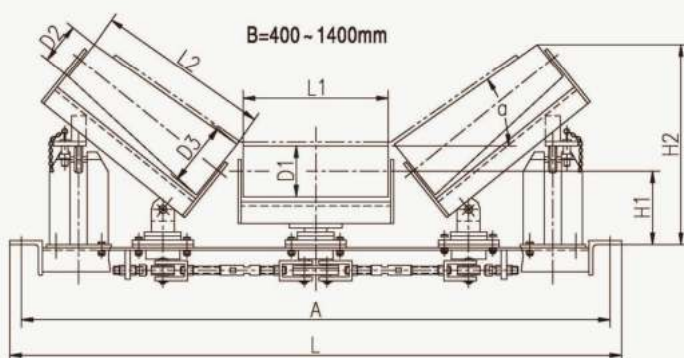
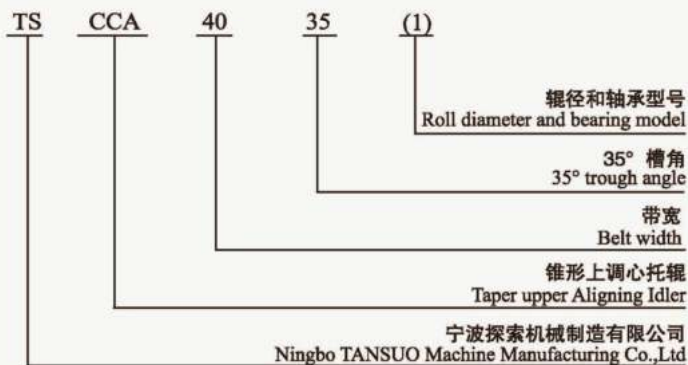
- 槽形调心托辊
- Trough Aligning Idler

带宽 Belt Width	型号 Model	辊子 Roller			轴承 型号 Bearing Model	A	L	H ₁	H ₂		P	Q	d ₀	重量 (kg) Weight(kg)	
		辊子型号 Roller Model	D	L1					35°	45°				35°	45°
1400	TS-CA-140-1	CR-108-305-530	108	530	305	1740	1800	184	550	620	280	220	M16	170	173
	TS-CA-140-2	CR-133-305-530	133	530	305	1740	1800	198.5	580	646	280	220	M16	200	203
	TS-CA-140-3	CR-133-306-530	133	530	306	1740	1800	198.5	580	650	280	220	M16	210	213
	TS-CA-140-4	CR-159-305-530	159	530	305	1740	1800	215.5	610	672	280	220	M16	235	238
	TS-CA-140-5	CR-159-306-530	159	530	306	1740	1800	215.5	610	680	280	220	M16	250	253
	TS-CA-140-6	CR-165.2-305-500	165.2	500	305	1730	1795	250	625	690	340	280	M16	255	258
	TS-CA-140-7	CR-165.2-306-500	165.2	500	306	1730	1795	250	625	690	340	280	M16	270	273
1600	TS-CA-160-1	CR-133-305-600	133	600	305	1980	2050	208.5	620	707	280	140	M16	235	240
	TS-CA-160-2	CR-133-306-600	133	600	306	1980	2050	208.5	620	707	280	140	M16	250	255
	TS-CA-160-3	CR-159-306-600	159	600	306	1980	2050	230.5	655	738	280	140	M16	270	275
	TS-CA-160-4	CR-159-308-600	159	600	308	1980	2050	230.5	655	738	280	140	M16	285	290
	TS-CA-160-5	CR-165.2-306-580	165.2	580	306	1930	1995	250.4	670	747	340	140	M16	260	265
	TS-CA-160-6	CR-165.2-308-580	165.2	580	308	1930	1995	250.4	670	747	340	140	M16	275	280
1800	TS-CA-180-1	CR-133-305-670	133	670	305	2180	2250	230.5	660	753	280	140	M16	250	255
	TS-CA-180-2	CR-133-306-670	133	670	306	2180	2250	230.5	660	753	280	140	M16	265	270
	TS-CA-180-3	CR-159-306-670	159	670	306	2180	2250	230.5	695	788	280	140	M16	285	290
	TS-CA-180-4	CR-159-308-670	159	670	308	2180	2250	240.5	710	803	280	140	M16	300	305
	TS-CA-180-5	CR-165.2-306-650	165.2	650	306	2200	2285	280.4	741	833	390	140	M16	290	295
	TS-CA-180-6	CR-165.2-308-650	165.2	650	308	2200	2285	280.4	741	833	390	140	M16	305	310
2000	TS-CA-200-1	CR-159-306-750	159	750	306	2420	2500	240.5	751	855	340	140	M16	340	348
	TS-CA-200-2	CR-159-308-750	159	750	308	2420	2500	250.5	761	865	340	140	M16	360	368
	TS-CA-200-3	CR-165.2-306-730	165.2	730	306	2420	2485	280.4	786	890	390	160	M16	340	348
	TS-CA-200-4	CR-165.2-308-730	165.2	730	308	2420	2485	280.4	786	890	390	160	M16	360	368
	TS-CA-200-5	CR-194-308-750	194	750	308	2420	2500	283	811	909	340	190	M16	380	388
	TS-CA-200-6	CR-194-310-750	194	750	310	2420	2500	283	811	909	340	190	M16	400	408
2200	TS-CA-220-1	CR-159-306-800	159	800	306	2420	2500	250.5	795	900	340	190	M16	360	368
	TS-CA-220-2	CR-159-308-800	159	800	308	2720	2800	265.5	807	913	340	190	M16	380	388
	TS-CA-220-3	CR-165.2-306-800	165.2	800	306	2720	2800	251.4	796	913	340	190	M16	370	378
	TS-CA-220-4	CR-165.2-308-800	165.2	800	308	2720	2800	265.4	809	917	340	190	M16	390	398
	TS-CA-220-5	CR-194-308-800	194	800	308	2720	2800	283	839	945	340	190	M16	400	408
	TS-CA-220-6	CR-194-310-800	194	800	310	2720	2800	293	849	955	340	190	M16	420	428
2400	TS-CA-240-1	CR-159-308-900	159	900	308	3020	3100	285.5	885	1006	340	190	M20	380	390
	TS-CA-240-2	CR-159-309-900	159	900	309	3020	3100	285.5	885	1006	340	190	M20	400	408
	TS-CA-240-3	CR-165.2-308-900	165.2	900	308	3020	3100	285.4	887	1008	340	190	M20	385	395
	TS-CA-240-4	CR-165.2-309-900	165.2	900	309	3020	3100	285.4	887	1008	340	190	M20	405	415
	TS-CA-240-5	CR-194-308-900	194	900	308	3020	3100	293	907	1026	340	190	M20	420	430
	TS-CA-240-6	CR-194-310-900	194	900	310	3020	3100	313	907	1026	340	190	M20	440	450

- 锥形上调心托辊
- Taper Upper Aligning Idler

标记方法

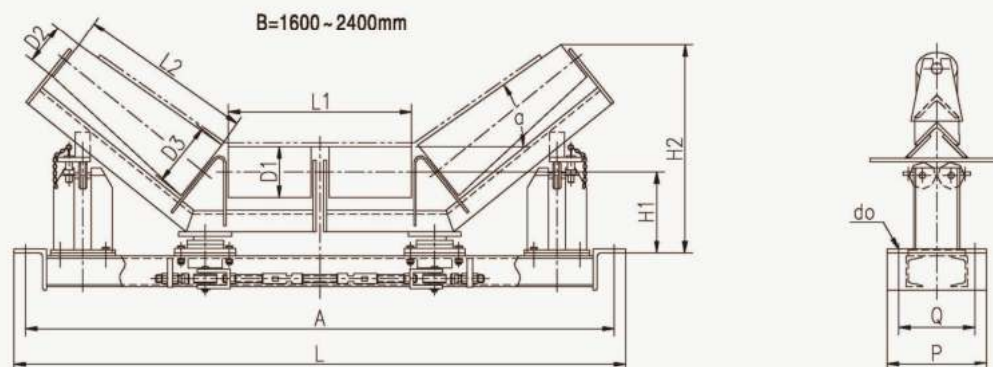
Labeling method:



带宽 Belt Width	型号 Model	辊子 Roller					轴承 型号 Bearing	A	L	H ₁	H ₂		P	Q	d ₀	重量 (kg) Weight(kg)	
		D ₁	L ₁	D ₂	D ₃	L ₂					35°	45°				35°	45°
400	TS-CCA-40	89	100	89	118	210	204	640	690	125	290	318	190	140	M12	70	73
450	TS-CCA-45	89	145	89	118	210	204	690	740	125	296	324	190	140	M12	75	78
500	TS-CCA-50	89	180	89	118	210	204	740	800	135.5	306	334	170	130	M12	80	83
600	TS-CCA-60	89	210	89	118	210	204	840	890	140	311	339	200	150	M12	85	88
650	TS-CCA-65	89	210	89	122	240	204	890	950	135.5	325	357	170	130	M12	90	93
750	TS-CCA-75	114.3	250	89	133	304	205	1040	1090	150	397	437	210	160	M12	110	113
800	TS-CCA-80-1	89	250	108	133	340	204	1090	1150	135.5	380	426	170	130	M12	105	108
	TS-CCA-80-2	108	250	108	133	340	205	1090	1150	146	400	446	170	130	M12	110	113
900	TS-CCA-90	114.3	280	89	133	340	305	1190	1240	150	420	465	210	160	M12	115	118
1000	TS-CCA-100-1	108	315	108	159	415	205	1290	1350	159	450	505	220	170	M16	145	150
	TS-CCA-100-2	133	315	108	159	415	305	1290	1350	173.5	478	533	220	170	M16	155	160
1050	TS-CCA-105	139.8	315	108	159	415	305	1340	1390	180	487	542	230	180	M12	160	165
1200	TS-CCA-120-1	108	380	108	176	500	305	1540	1600	176	521	588	260	200	M16	160	165
	TS-CCA-120-2	133	380	133	176	500	305	1540	1600	190.5	548	615	260	200	M16	170	175
	TS-CCA-120-3	133	380	133	176	500	306	1540	1600	190.5	548	615	260	200	M16	175	180
	TS-CCA-120-4	139.8	370	108	159	475	305	1490	1540	180	525	588	230	180	M16	170	175
	TS-CCA-120-5	139.8	370	108	159	475	306	1490	1540	180	525	588	230	180	M16	175	180
	TS-CCA-120-6	159	380	159	194	500	305	1540	1600	207.5	578	645	260	200	M16	195	200
	TS-CCA-120-7	159	380	159	194	500	306	1540	1600	207.5	578	645	260	200	M16	210	215

自动纠偏 Automatic correction

- 锥形上调心托辊
Taper Upper Aligning Idler

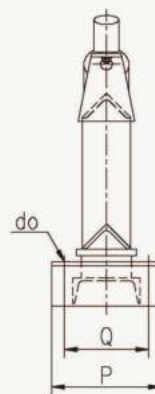
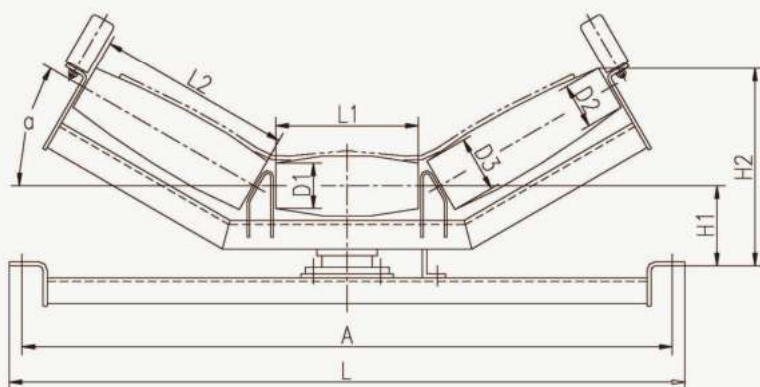


带宽 Belt Width	型号 Model	辊子 Roller					轴承 型号 Bearing Model	A	L	H ₁	H ₂		P	Q	d ₀	重量 (kg) Weight (kg)	
		D ₁	L ₁	D ₂	D ₃	L ₂					35°	45°				35°	45°
1400	TS-CCA-140-1	108	465	108	176	550	305	1740	1800	184	558	621	280	220	M16	180	185
	TS-CCA-140-2	133	465	108	176	550	305	1740	1800	198.5	584	647	280	220	M16	210	215
	TS-CCA-140-3	133	465	108	176	550	306	1740	1800	198.5	584	647	280	220	M16	220	225
	TS-CCA-140-4	159	465	108	176	550	305	1740	1800	215.5	615	688	280	220	M16	245	250
	TS-CCA-140-5	159	465	108	176	550	306	1740	1800	215.5	615	688	280	220	M16	260	265
	TS-CCA-140-6	165.2	465	108	176	550	305	1730	1795	250	641.7	715	340	280	M16	265	270
	TS-CCA-140-7	165.2	465	108	176	550	306	1730	1795	250	641.7	715	340	280	M16	280	285
1600	TS-CCA-160-1	133	530	108	176	590	305	1980	2050	208.5	625	704	280	140	M16	245	255
	TS-CCA-160-2	133	530	108	176	590	306	1980	2050	208.5	625	704	280	140	M16	260	270
	TS-CCA-160-3	159	530	133	194	650	306	1980	2050	230.5	694	773	280	140	M16	280	290
	TS-CCA-160-4	159	530	133	194	650	308	1980	2050	230.5	694	773	280	140	M16	295	305
	TS-CCA-160-5	165.2	530	133	194	610	306	1930	1995	250.4	694	768	340	140	M16	270	280
	TS-CCA-160-6	165.2	530	133	194	610	308	1930	1995	250.4	694	768	340	140	M16	285	295
1800	TS-CCA-180-1	133	600	108	194	680	305	2200	2280	208.5	681	762	280	140	M16	295	305
	TS-CCA-180-2	133	600	108	194	680	306	2200	2280	208.5	681	762	280	140	M16	295	305
	TS-CCA-180-3	159	600	133	194	685	306	2200	2280	230.5	716	797	280	140	M16	295	305
	TS-CCA-180-4	159	600	133	194	685	308	2200	2280	240.5	726	807	280	140	M16	310	320
	TS-CCA-180-5	165.2	580	133	194	650	306	2200	2285	280.4	744	822	390	140	M16	300	310
	TS-CCA-180-6	165.2	580	133	194	650	308	2200	2285	280.4	744	822	390	140	M16	315	325
2000	TS-CCA-200-1	159	670	133	194	820	306	2420	2500	240.5	811	901	340	140	M16	350	360
	TS-CCA-200-2	159	670	133	194	820	308	2420	2500	250.5	821	911	340	140	M16	370	380
	TS-CCA-200-3	165.2	650	133	194	820	306	2420	2485	280.4	851	938	390	160	M16	350	360
	TS-CCA-200-4	165.2	650	133	194	820	308	2420	2485	280.4	851	938	390	160	M16	370	380
	TS-CCA-200-5	194	670	140	219	820	308	2420	2500	283	857	946	340	190	M16	370	380
	TS-CCA-200-6	194	670	140	194	820	310	2420	2500	283	857	946	340	190	M16	390	405
2200	TS-CCA-220-1	159	750	133	194	820	306	2720	2800	250.5	821	922	340	190	M16	360	375
	TS-CCA-220-2	159	750	133	194	820	308	2720	2800	265.5	836	936	340	190	M16	380	395
	TS-CCA-220-3	165.2	750	133	194	820	306	2720	2800	251.4	822	922	340	190	M16	360	375
	TS-CCA-220-4	165.2	750	133	194	820	308	2720	2800	265.4	836	936	340	190	M16	380	395
	TS-CCA-220-5	194	750	140	219	820	308	2720	2800	283	857	957	340	190	M16	390	405
	TS-CCA-220-6	194	750	140	219	820	310	2720	2800	293	867	967	340	190	M16	410	425
2400	TS-CCA-240-1	159	800	133	219	900	308	3020	3100	285.5	906	1013	340	190	M20	370	385
	TS-CCA-240-2	159	800	133	219	900	310	3020	3100	285.5	906	1013	340	190	M20	390	405
	TS-CCA-240-3	165.2	800	133	219	900	308	3020	3100	285.4	906	1013	340	190	M20	375	390
	TS-CCA-240-4	165.2	800	133	219	900	310	3020	3100	285.4	906	1013	340	190	M20	395	410
	TS-CCA-240-5	194	800	140	219	900	308	3020	3100	293	894	1004	340	190	M20	430	445
	TS-CCA-240-6	194	800	140	219	900	310	3020	3100	313	914	1024	340	190	M16	450	465

- 鼓形调心托辊
- Drum-type Aligning Idler

标记方法

Labeling method:



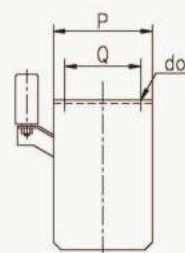
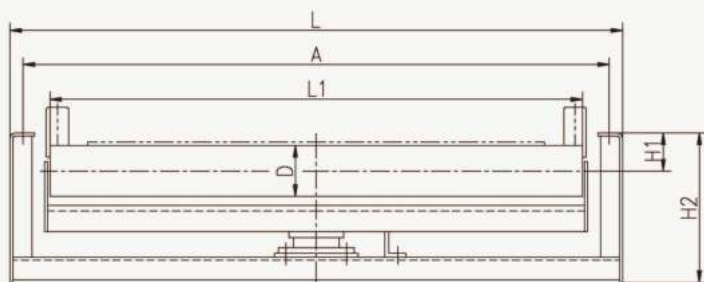
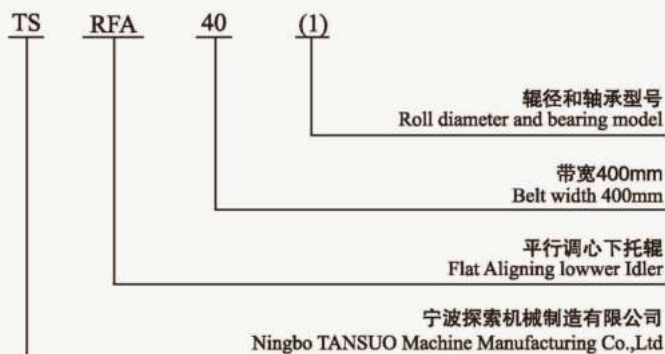
带宽 Belt Width	型号 Model	辊子 Roller					轴承 型号 Bearing	A	L	H ₁	H ₂		P	Q	d ₀	重量 (kg) Weight(kg)	
		D ₁	L ₁	D ₂	D ₃	L ₂					35°	45°				35°	45°
400	TS-CDA-40	89	120	89	110	180	204	640	690	125	265.2	301	190	140	M12	70	73
450	TS-CDA-45	89	140	89	110	180	204	690	740	125	265.2	301	190	140	M12	75	78
500	TS-CDA-50	89	160	89	110	200	204	740	800	135.5	300	325	170	130	M12	80	85
600	TS-CDA-60	89	180	89	110	200	204	840	890	140	306	329.5	200	150	M12	85	90
650	TS-CDA-65	89	210	89	110	250	204	890	950	135.5	330	361	170	130	M12	90	95
750	TS-CDA-75	89	250	89	110	300	205	1040	1090	150	350	411	210	160	M12	100	105
800	TS-CDA-80	108	275	108	133	315	205	1090	1150	146	385	424	170	130	M12	105	110
900	TS-CDA-90	108	300	108	133	380	305	1190	1240	150	398.5	474	210	160	M12	110	115
1000	TS-CDA-100	108	340	108	133	400	305	1290	1350	159	437	497	220	170	M16	150	155
1050	TS-CDA-105	108	340	108	133	465	305	1340	1390	180	439	564	230	180	M12	155	160
1200	TS-CDA-120	108	425	108	133	530	305	1540	1600	176	503	606	280	200	M16	160	170
1400	TS-CDA-140-1	108	490	108	196	530	305	1740	1800	184	548	645	280	220	M16	175	185
	TS-CDA-140-2	159	490	159	196	530	306	1740	1800	184	548	645	280	220	M16	260	270
1600	TS-CDA-160	159	540	159	196	600	306	1980	2050	236	620	745	280	140	M16	280	290
1800	TS-CDA-180	159	610	159	196	670	306	2200	2280	236	660	796	280	140	M16	310	320
2000	TS-CDA-200	159	690	159	196	750	306	2400	2470	238	702	855	340	190	M16	370	380
2200	TS-CDA-220	159	740	159	196	800	306	2720	2800	238	777	890	340	190	M16	390	400
2400	TS-CDA-240	159	800	159	196	900	308	3020	3100	313	843.5	1036	340	190	M20	410	420

自动纠偏 Automatic correction

- 平行调心下托辊
- Flat Aligning lower Idler

标记方法

Labeling method:



带宽 Belt Width	型号 Model	辊子 Roller			轴承型号 Bearing Model	A	L	H ₁	H ₂	P	Q	d _o	重量 (kg) Weight(kg)
		辊子型号 Roller Model	D	L1									35°
400	TS-RFA-40	CR-89-204-460	89	460	204	640	690	100	335	120	60	M12	40
450	TS-RFA-45	CR-89-204-510	89	510	204	690	740	100	335	120	60	M12	43
500	TS-RFA-50	CR-89-204-560	89	560	204	740	792	100	335	145	90	M12	46
600	TS-RFA-60	CR-89-204-660	89	660	204	840	890	100	335	120	60	M12	48
650	TS-RFA-65	CR-89-204-750	89	750	204	890	942	100	335	145	90	M12	50
750	TS-RFA-75	CR-114.3-205-850	114.3	850	205	1040	1090	100	347	120	60	M12	58
800	TS-RFA-80-1	CR-89-204-950	89	950	204	1090	1142	144.5	379	145	90	M12	57
	TS-RFA-80-2	CR-108-205-950	108	950	205	1090	1142	154	398	145	90	M12	62
900	TS-RFA-90	CR-114.3-305-1000	114.3	1000	305	1190	1240	154	401	120	60	M12	66
1000	TS-RFA-100-1	CR-108-305-1150	108	1150	305	1290	1342	164	414	150	90	M16	70
	TS-RFA-100-2	CR-133-305-1150	133	1150	305	1290	1342	176.5	439	150	90	M16	77
1050	TS-RFA-105	CR-139.8-305-1150	139.8	1150	305	1340	1390	174	440	150	100	M12	80
1200	TS-RFA-120-1	CR-108-305-1400	108	1400	305	1540	1592	174	424	150	90	M16	90
	TS-RFA-120-2	CR-133-305-1400	133	1400	305	1540	1592	186.5	449	150	90	M16	100
	TS-RFA-120-3	CR-133-306-1400	133	1400	306	1540	1592	186.5	449	150	90	M16	110
	TS-RFA-120-4	CR-139.8-305-1300	139.8	1300	305	1490	1540	199.5	466	150	100	M16	100
	TS-RFA-120-5	CR-139.8-306-1300	139.8	1300	306	1490	1540	199.5	466	150	100	M16	110
	TS-RFA-120-6	CR-159-305-1400	159	1400	305	1540	1592	199.5	475	150	90	M16	110
	TS-RFA-120-7	CR-159-306-1400	159	1400	306	1540	1592	199.5	475	150	90	M16	115

- 平行调心下托辊
- Flat Aligning lower Idler

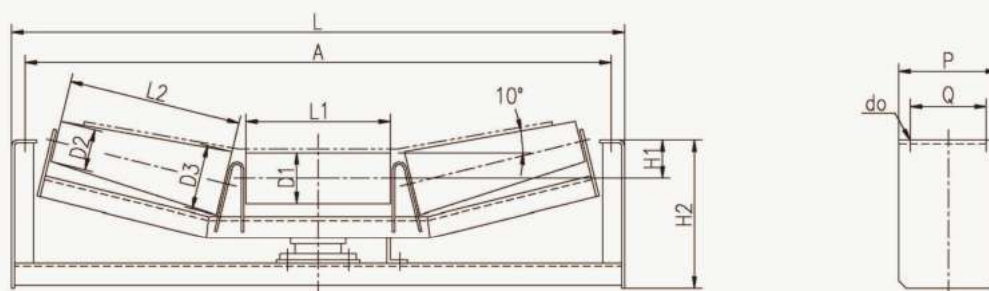
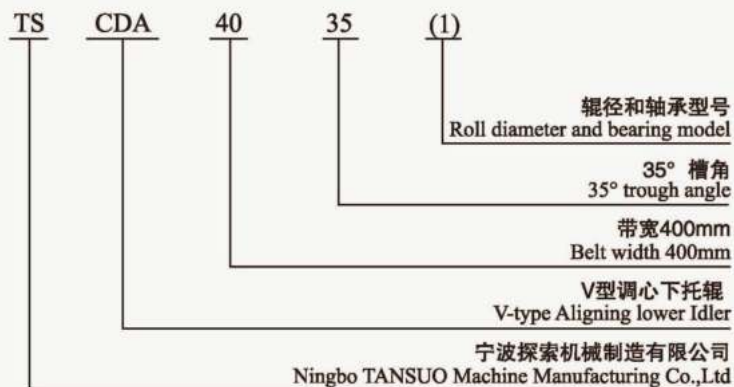
带宽 Belt Width	型号 Model	辊子 Roller			轴承型号 Bearing Model	A	L	H ₁	H ₂	P	Q	d ₀	重量 (kg) Weight(kg)
		辊子型号 Roller Model	D	L1									35°
1400	TS-RFA -140-1	CR-108-305-1600	108	1600	305	1740	1800	184	434	150	90	M16	95
	TS-RFA -140-2	CR-133-305-1600	133	1600	305	1740	1800	196.5	459	150	90	M16	110
	TS-RFA -140-3	CR-133-306-1600	133	1600	306	1740	1800	196.5	459	150	90	M16	120
	TS-RFA -140-4	CR-159-305-1600	159	1600	305	1740	1800	209.5	485	150	90	M16	125
	TS-RFA -140-5	CR-159-306-1600	159	1600	306	1740	1800	209.5	485	150	90	M16	135
	TS-RFA -140-6	CR-165.2-305-1530	165.2	1530	305	1730	1790	160	437	150	120	M16	122
	TS-RFA -140-7	CR-165.2-306-1530	165.2	1530	306	1730	1790	160	437	150	120	M16	132
1600	TS-RFA -160-1	CR-133-305-1800	133	1800	305	1980	2050	100	413	240	150	M16	155
	TS-RFA -160-2	CR-133-306-1800	133	1800	306	1980	2050	100	413	240	150	M16	165
	TS-RFA -160-3	CR-159-306-1800	159	1800	306	1980	2050	100	426	240	150	M16	175
	TS-RFA -160-4	CR-159-308-1800	159	1800	308	1980	2050	100	426	240	150	M16	185
	TS-RFA -160-5	CR-165.2-306-1730	165.2	1730	306	1930	1990	160	487	240	120	M16	170
	TS-RFA -160-6	CR-165.2-308-1730	165.2	1730	308	1930	1990	160	487	240	120	M16	180
1800	TS-RFA -180-1	CR-133-305-2000	133	2000	305	2180	2250	100	413	240	150	M16	170
	TS-RFA -180-2	CR-133-306-2000	133	2000	306	2180	2250	100	413	240	150	M16	180
	TS-RFA -180-3	CR-159-306-2000	159	2000	306	2180	2250	100	426	240	150	M16	190
	TS-RFA -180-4	CR-159-308-2000	159	2000	308	2180	2250	100	426	240	150	M16	200
	TS-RFA -180-5	CR-165.2-306-2000	165.2	2000	306	2200	2280	160	487	240	120	M16	195
	TS-RFA -180-6	CR-165.2-308-2000	165.2	2000	308	2200	2280	160	487	240	120	M16	205
2000	TS-RFA -200-1	CR-159-306-2200	159	2200	306	2420	2500	100	545	280	150	M16	215
	TS-RFA -200-2	CR-159-308-2200	159	2200	308	2420	2500	100	545	280	150	M16	225
	TS-RFA -200-3	CR-165.2-306-2200	165.2	2200	306	2420	2480	160	606	280	120	M16	220
	TS-RFA -200-4	CR-165.2-308-2200	165.2	2200	308	2420	2480	160	606	280	120	M16	230
	TS-RFA -200-5	CR-194-308-2200	194	2200	308	2420	2500	147	609	280	150	M16	240
	TS-RFA -200-6	CR-194-310-2200	194	2200	310	2420	2500	147	609	280	150	M16	250
2200	TS-RFA -220-1	CR-159-306-2400	159	2400	306	2720	2800	100	545	280	150	M16	230
	TS-RFA -220-2	CR-159-308-2400	159	2400	308	2720	2800	100	545	280	150	M16	240
	TS-RFA -220-3	CR-165.2-306-2400	165.2	2400	306	2720	2800	133	579	280	150	M16	235
	TS-RFA -220-4	CR-165.2-308-2400	165.2	2400	308	2720	2800	133	579	280	150	M16	245
	TS-RFA -220-5	CR-194-308-2400	194	2400	308	2720	2800	147	609	280	150	M16	255
	TS-RFA -220-6	CR-194-310-2400	194	2400	310	2720	2800	147	609	280	150	M16	265
2400	TS-RFA -240-1	CR-159-308-2800	159	2800	308	3020	3110	100	545	280	150	M20	250
	TS-RFA -240-2	CR-159-310-2800	159	2800	310	3020	3110	100	545	280	150	M20	265
	TS-RFA -240-3	CR-165.2-308-2800	165.2	2800	308	3020	3110	160	487	280	150	M20	255
	TS-RFA -240-4	CR-165.2-310-2800	165.2	2800	310	3020	3110	160	487	280	150	M20	270
	TS-RFA -240-5	CR-194-308-2800	194	2800	308	3020	3110	117.5	580	280	150	M20	275
	TS-RFA -240-6	CR-194-310-2800	194	2800	310	3020	3110	117.5	580	280	150	M20	290

自动纠偏 Automatic correction

- V型调心下托辊
- V-type Aligning lower Idler

标记方法

Labeling method:



带宽 Belt Width	型号 Model	辊子 Roller					轴承型号 Bearing Model	A	L	H ₁	H ₂	P	Q	d ₀	重量 (kg) Weight(kg)
		D1	L1	D2	D3	L2									35°
400	TS-RVA-40	89	100	89	118	210	204	640	690	100	335	120	60	M12	43
450	TS-RVA-45	89	145	89	118	210	204	690	740	100	335	120	60	M12	46
500	TS-RVA-50	89	180	89	118	210	204	740	792	100	335	145	90	M12	49
600	TS-RVA-60	89	210	89	118	210	204	840	890	100	335	120	60	M12	51
650	TS-RVA-65	89	210	89	122	240	204	890	942	100	335	145	90	M12	53
750	TS-RVA-75	114.3	250	89	133	304	205	1040	1090	100	347	120	60	M12	61
800	TS-RVA-80-1	89	250	108	133	340	204	1090	1142	144.5	379	145	90	M12	60
	TS-RVA-80-2	108	250	108	133	340	205	1090	1142	154	398	145	90	M12	65
900	TS-RVA-90	114.3	280	89	133	340	305	1190	1240	154	401	120	60	M12	69
1000	TS-RVA-100-1	108	315	108	159	415	305	1290	1342	164	414	150	90	M16	73
	TS-RVA-100-2	133	315	108	159	415	305	1290	1342	176.5	439	150	90	M16	80
1050	TS-RVA-105	139.8	315	108	159	415	305	1340	1390	174	440	150	100	M12	83
1200	TS-RVA-120-1	108	380	108	176	500	305	1540	1592	174	424	150	90	M16	95
	TS-RVA-120-2	133	380	133	176	500	305	1540	1592	186.5	449	150	90	M16	105
	TS-RVA-120-3	133	380	133	176	500	306	1540	1592	186.5	449	150	90	M16	115
	TS-RVA-120-4	139.8	370	108	159	475	305	1490	1540	199.5	466	150	100	M16	105
	TS-RVA-120-5	139.8	370	108	159	475	306	1490	1540	199.5	466	150	100	M16	115
	TS-RVA-120-6	159	380	159	194	500	305	1540	1592	199.5	475	150	90	M16	115
	TS-RVA-120-7	159	380	159	194	500	306	1540	1592	199.5	475	150	90	M16	120

- V型调心下托辊
- V-type Aligning lower Idler

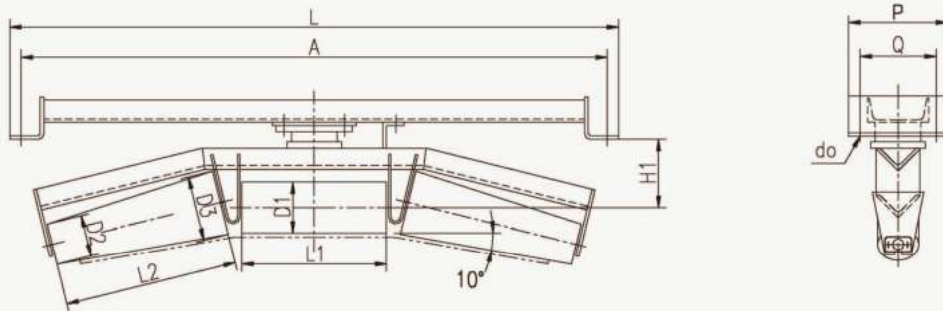
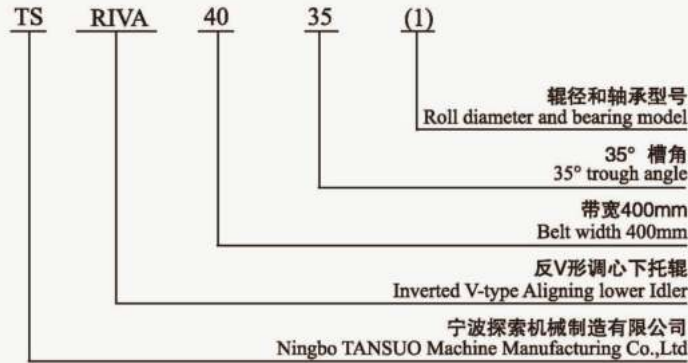
带宽 Belt Width	型号 Model	辊子 Roller					轴承型号 Bearing Model	A	L	H ₁	H ₂	P	Q	d ₀	重量 (kg) Weight(kg)
		D1	L1	D2	D3	L2									35°
1400	TS-RVA-140-1	108	465	108	176	550	305	1740	1800	184	434	150	90	M16	100
	TS-RVA-140-2	133	465	108	176	550	305	1740	1800	196.5	459	150	90	M16	115
	TS-RVA-140-3	133	465	108	176	550	306	1740	1800	196.5	459	150	90	M16	125
	TS-RVA-140-4	159	465	108	176	550	305	1740	1800	209.5	485	150	90	M16	130
	TS-RVA-140-5	159	465	108	176	550	306	1740	1800	209.5	485	150	90	M16	140
	TS-RVA-140-6	165.2	465	108	176	550	305	1730	1790	160	437	150	120	M16	127
	TS-RVA-140-7	165.2	465	108	176	550	306	1730	1790	160	437	150	120	M16	137
1600	TS-RVA-160-1	133	530	108	176	590	305	1980	2050	100	413	240	150	M16	160
	TS-RVA-160-2	133	530	108	176	590	306	1980	2050	100	413	240	150	M16	170
	TS-RVA-160-3	159	530	133	194	650	306	1980	2050	100	426	240	150	M16	180
	TS-RVA-160-4	159	530	133	194	650	308	1980	2050	100	426	240	150	M16	190
	TS-RVA-160-5	165.2	530	133	194	610	306	1930	1990	160	487	240	120	M16	175
	TS-RVA-160-6	165.2	530	133	194	610	308	1930	1990	160	487	240	120	M16	185
1800	TS-RVA-180-1	133	600	108	194	680	305	2180	2250	100	413	240	150	M16	175
	TS-RVA-180-2	133	600	108	194	680	306	2180	2250	100	413	240	150	M16	185
	TS-RVA-180-3	159	600	133	194	685	306	2180	2250	100	426	240	150	M16	195
	TS-RVA-180-4	159	600	133	194	685	308	2180	2250	100	426	240	150	M16	205
	TS-RVA-180-5	165.2	580	133	194	650	306	2200	2280	160	487	240	120	M16	200
	TS-RVA-180-6	165.2	580	133	194	650	308	2200	2280	160	487	240	120	M16	210
2000	TS-RVA-200-1	159	670	133	194	820	306	2420	2500	100	545	280	150	M16	225
	TS-RVA-200-2	159	670	133	194	820	308	2420	2500	100	545	280	150	M16	235
	TS-RVA-200-3	165.2	650	133	194	820	306	2420	2480	160	606	280	120	M16	230
	TS-RVA-200-4	165.2	650	133	194	820	308	2420	2480	160	606	280	120	M16	240
	TS-RVA-200-5	194	670	140	219	820	308	2420	2500	147	609	280	150	M16	250
	TS-RVA-200-6	194	670	140	194	820	310	2420	2500	147	609	280	150	M16	260
2200	TS-RVA-220-1	159	750	133	194	820	306	2720	2800	100	545	280	150	M16	240
	TS-RVA-220-2	159	750	133	194	820	308	2720	2800	100	545	280	150	M16	250
	TS-RVA-220-3	165.2	750	133	194	820	306	2720	2800	133	579	280	150	M16	245
	TS-RVA-220-4	165.2	750	133	194	820	308	2720	2800	133	579	280	150	M16	255
	TS-RVA-220-5	194	750	140	219	820	308	2720	2800	147	609	280	150	M16	265
	TS-RVA-220-6	194	750	140	219	820	310	2720	2800	147	609	280	150	M16	275
2400	TS-RVA-240-1	159	800	133	219	900	308	3020	3110	100	545	280	150	M20	260
	TS-RVA-240-2	159	800	133	219	900	310	3020	3110	100	545	280	150	M20	275
	TS-RVA-240-3	165.2	800	133	219	900	308	3020	3110	160	487	280	150	M20	265
	TS-RVA-240-4	165.2	800	133	219	900	310	3020	3110	160	487	280	150	M20	280
	TS-RVA-240-5	194	800	140	219	900	308	3020	3110	117.5	580	280	150	M20	285
	TS-RVA-240-6	194	800	140	219	900	310	3020	3110	117.5	580	280	150	M20	300

自动纠偏 Automatic correction

- 反V形调心下托辊
- Inverted V-type Aligning lower Idler

标记方法

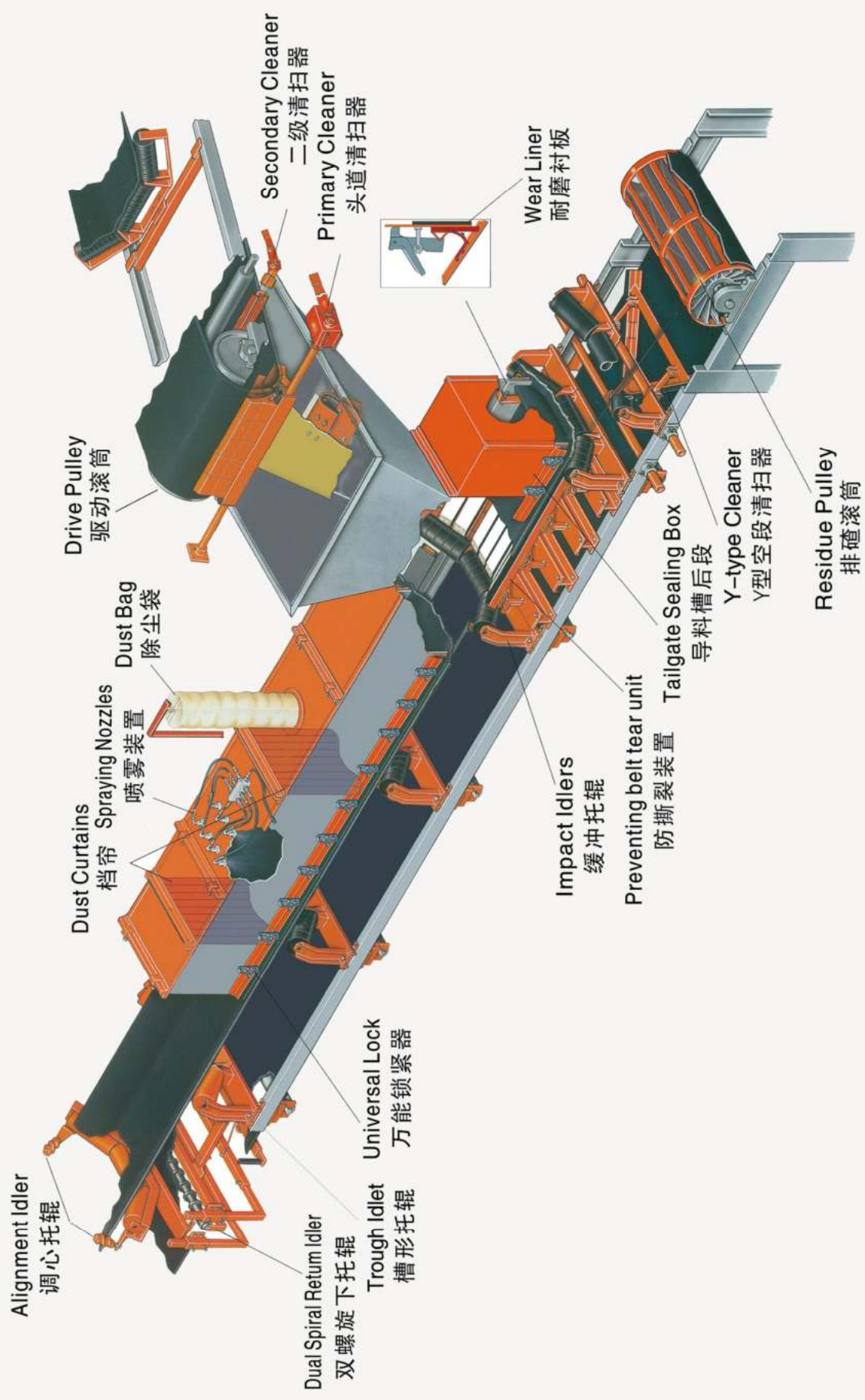
Labeling method:



带宽 Belt Width	型号 Model	辊子Roller					轴承型号 Bearing Model	A	L	H ₁	H ₂	P	Q	d ₀	重量 (kg) Weight(kg)
		D1	L1	D2	D3	L2									
400	TS-RIVA-40	89	100	89	118	210	204	640	690	100	190	60	M12	65	43
450	TS-RIVA-45	89	145	89	118	210	204	690	740	100	190	60	M12	70	46
500	TS-RIVA-50	89	180	89	118	210	204	740	792	100	170	90	M12	73	49
600	TS-RIVA-60	89	210	89	118	210	204	840	890	100	200	60	M12	78	51
650	TS-RIVA-65	89	210	89	122	240	204	890	942	100	170	90	M12	82	53
750	TS-RIVA-75	114.3	250	89	133	304	205	1040	1090	100	210	60	M12	102	61
800	TS-RIVA-80-1	89	250	108	133	340	204	1090	1142	144.5	170	90	M12	97	60
	TS-RIVA-80-2	108	250	108	133	340	205	1090	1142	154	170	90	M12	102	65
900	TS-RIVA-90	114.3	280	89	133	340	305	1190	1240	154	210	60	M12	105	69
1000	TS-RIVA-100-1	108	315	108	159	415	305	1290	1342	164	220	90	M16	135	73
	TS-RIVA-100-2	133	315	108	159	415	305	1290	1342	176.5	220	90	M16	145	80
1050	TS-RIVA-105	139.8	315	108	159	415	305	1340	1390	174	230	100	M12	150	83
1200	TS-RIVA-120-1	108	380	108	176	500	305	1540	1592	174	280	90	M16	150	95
	TS-RIVA-120-2	133	380	133	176	500	305	1540	1592	186.5	280	90	M16	160	105
	TS-RIVA-120-3	133	380	133	176	500	306	1540	1592	186.5	280	90	M16	165	115
	TS-RIVA-120-4	139.8	370	108	159	475	305	1490	1540	199.5	280	100	M16	160	105
	TS-RIVA-120-5	139.8	370	108	159	475	306	1490	1540	199.5	280	100	M16	165	115
	TS-RIVA-120-6	159	380	159	194	500	305	1540	1592	199.5	280	90	M16	180	115
	TS-RIVA-120-7	159	380	159	194	500	306	1540	1592	199.5	280	90	M16	195	120

- 反V形调心下托辊
- Inverted V-type Aligning lower Idler

带宽 Belt Width	型号 Model	辊子 Roller					轴承型号 Bearing Model	A	L	H ₁	H ₂	P	Q	d ₀	重量 (kg) Weight(kg)
		D1	L1	D2	D3	L2									
1400	TS-RIVA-140-1	108	465	108	176	550	305	1740	1800	184	280	90	M16	165	100
	TS-RIVA-140-2	133	465	108	176	550	305	1740	1800	196.5	280	90	M16	195	115
	TS-RIVA-140-3	133	465	108	176	550	306	1740	1800	196.5	280	90	M16	205	125
	TS-RIVA-140-4	159	465	108	176	550	305	1740	1800	209.5	280	90	M16	230	130
	TS-RIVA-140-5	159	465	108	176	550	306	1740	1800	209.5	280	90	M16	245	140
	TS-RIVA-140-6	165.2	465	108	176	550	305	1730	1790	160	340	120	M16	250	127
	TS-RIVA-140-7	165.2	465	108	176	550	306	1730	1790	160	340	120	M16	265	137
1600	TS-RIVA-160-1	133	530	108	176	590	305	1980	2050	100	280	150	M16	240	160
	TS-RIVA-160-2	133	530	108	176	590	306	1980	2050	100	280	150	M16	245	170
	TS-RIVA-160-3	159	530	133	194	650	306	1980	2050	100	280	150	M16	265	180
	TS-RIVA-160-4	159	530	133	194	650	308	1980	2050	100	280	150	M16	280	190
	TS-RIVA-160-5	165.2	530	133	194	610	306	1930	1990	160	340	120	M16	255	175
	TS-RIVA-160-6	165.2	530	133	194	610	308	1930	1990	160	340	120	M16	270	185
1800	TS-RIVA-180-1	133	600	108	194	680	305	2180	2250	100	280	150	M16	245	175
	TS-RIVA-180-2	133	600	108	194	680	306	2180	2250	100	280	150	M16	260	185
	TS-RIVA-180-3	159	600	133	194	685	306	2180	2250	100	280	150	M16	280	195
	TS-RIVA-180-4	159	600	133	194	685	308	2180	2250	100	280	150	M16	295	205
	TS-RIVA-180-3	165.2	580	133	194	650	306	2200	2280	160	390	120	M16	285	200
	TS-RIVA-180-4	165.2	580	133	194	650	308	2200	2280	160	390	120	M16	300	210
2000	TS-RIVA-200-1	159	670	133	194	820	306	2420	2500	100	340	150	M16	330	225
	TS-RIVA-200-2	159	670	133	194	820	308	2420	2500	100	340	150	M16	350	235
	TS-RIVA-200-3	165.2	650	133	194	820	306	2420	2480	160	390	120	M16	330	230
	TS-RIVA-200-4	165.2	650	133	194	820	308	2420	2480	160	390	120	M16	350	240
	TS-RIVA-200-5	194	670	140	219	820	308	2420	2500	147	340	150	M16	370	250
	TS-RIVA-200-6	194	670	140	194	820	310	2420	2500	147	340	150	M16	390	260
2200	TS-RIVA-220-1	159	750	133	194	820	306	2720	2800	100	340	150	M16	350	240
	TS-RIVA-220-2	159	750	133	194	820	308	2720	2800	100	340	150	M16	370	250
	TS-RIVA-220-3	165.2	750	133	194	820	306	2720	2800	133	340	150	M16	360	245
	TS-RIVA-220-4	165.2	750	133	194	820	308	2720	2800	133	340	150	M16	380	255
	TS-RIVA-220-5	194	750	140	219	820	308	2720	2800	147	340	150	M16	390	265
	TS-RIVA-220-6	194	750	140	219	820	310	2720	2800	147	340	150	M16	410	275
2400	TS-RIVA-240-1	159	800	133	219	900	308	3020	3110	100	340	150	M20	370	260
	TS-RIVA-240-2	159	800	133	219	900	310	3020	3110	100	340	150	M20	390	275
	TS-RIVA-240-3	165.2	800	133	219	900	308	3020	3110	160	340	150	M20	375	265
	TS-RIVA-240-4	165.2	800	133	219	900	310	3020	3110	160	340	150	M20	395	280
	TS-RIVA-240-5	194	800	140	219	900	308	3020	3110	117.5	340	150	M20	410	285
	TS-RIVA-240-6	194	800	140	219	900	310	3020	3110	117.5	340	150	M20	430	300





宁波探索机械制造有限公司

NINGBO TANSUO MACHINE MANUFACTURING CO. LTD.

地址：中国宁波象山县经济开发区丹城白鹤路 206 号

Address: 206 Baihe Rd., Economic Development Zone, Xiangshan District, Ningbo, CHINA

电话 Telephone : 0574-65782297 (总机) 65723607

传真 Fax : 0574-65725072 65751946 邮编 Postcode : 315700

Email: tsjx@cnool.net website: <http://www.tsjx.net>