



电 动 推 杆

MOTOR CYLINDER



宁波探索机械制造有限公司
NINGBO TANSUO MACHINERY MANUFACTURING CO.,LTD.

1、概述

BSDb型电动推杆是大型的重载电动推杆，可代替液压油缸、汽缸，其提供的推力可达到2000kg~30000kg。它是通过使用高效的滚珠丝杆和高强度的减速齿轮来实现；另外采用了一个与重载的碟形弹簧相连接的独特推力限制器，直接传递载荷；通过限位器开关可以使电动推杆无论是正向还是反向运行时，在额定载荷下停在任何位置上。

2、特点

2.1 BSDb型电动推杆采用了推力限制器

这种独特的推力限制器允许通过外部限位开关使电动推杆在正反向行程终点停止。当在行程范围内发生过载时，它可立即切断电源，使电动推杆停止工作。

2.2 强大的夹紧力

BSDb型电动推杆都采用了靠弹簧加载的常闭制动器来使电机立即停止运转，其夹紧力可以达到推力的150%或者更多，即使在电动机发生故障的情况下，制动器动作仍然可靠有效。

2.3 工作平稳、可靠

BSDb型电动推杆均为电力驱动，因此，只需要通过一个开关的动作，就能实现大行程可靠的自动控制。

2.4 成本低

和液压缸相比，BSDb型电动推杆不需要其它的辅助设备和管路；安装后的运行成本非常合理，因为在额定载荷下停止不需要依靠动力。

2.5 安装、维护简便

BSDb型电动推杆均为齿轮马达的一种形式，在安装时不需要专用的工具和技术，在维护时只需要定期加油润滑即可。

1. General Survey:

Model BSDb motor cylinders series are large size heavy load models taking the place of hydraulic and oil cylinders with the capable of developing a thrust of up to 30 tons. This is made possible through the use of high efficiency ball screws and powerful reduction gears. In addition a unique thrust limiter that combines high load disk spring, directly carrying the load, with limit switches allows forward and reverse constant pressure stops at any position.

2. Features:

2.1 Model BSDb are quipped with a thrust limiter

This unique thrust limiter allows forward or resverse stop at each end of the stroke by means of an external stopper. When an overload occurs even during the stroke the power is cut off in stantaneous stopping the unit.

2.2 Powerful Holding

All model BSDb employ a spring loaded OFF brake which holds the instant the motor stops. The holding power is 150% or more. The brake operates positively even in case of a power failure.

2.3 Positive and Quiet Operation

All model BSDb are powered electrically. Therefore a wide range of movements and positive automatic control can be done with the actuation of only one switch.

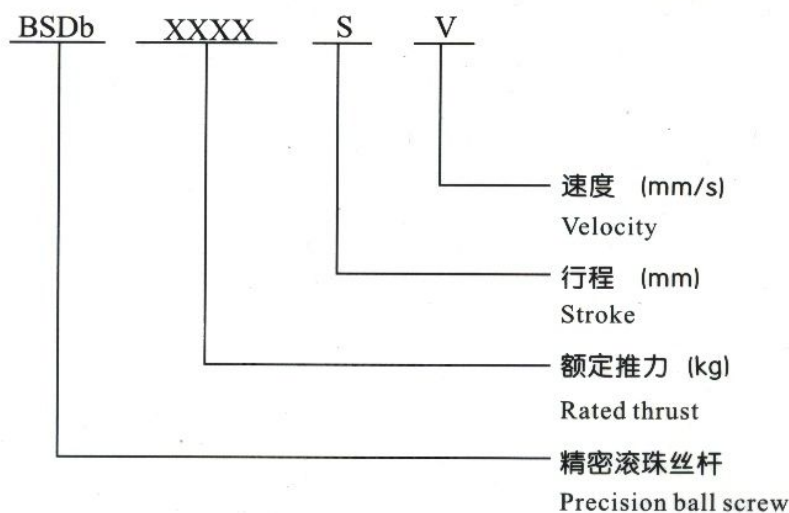
2.4 Low Cost

Comparing with hydraulic cylinders model BSDb do not require the auxiliary equipment and piping. The operation cost after installation is very reasonable partly because no power is required during constant pressure stops.

2.5 Simple Installation And Maintenance

Model BSDb are a kind of gearmotor. No special tools or techniques are required for installation and only regular grease loblrication for maintenance is required.

3、BSDb、DG型电动推杆订货代号与各种型号推杆技术、外形参数 Model BSDb, Model DG motor cylinders ordering information and the technical parameters and overall parameters for all models:

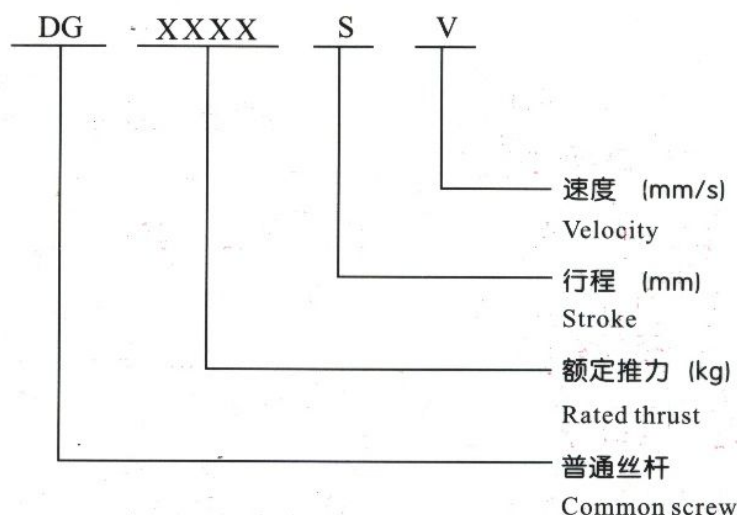


选型示例：推力2000kg，行程500mm，速度30mm/s，精密滚珠丝杆

Example: thrust 2000kg, stroke 500mm, velocity 30mm/s, precision ball screw

型号：BSDb 2000500-30

Model:BSDb 2000500-30



选型示例：推力2000kg，行程500mm，速度30mm/s，普通丝杆

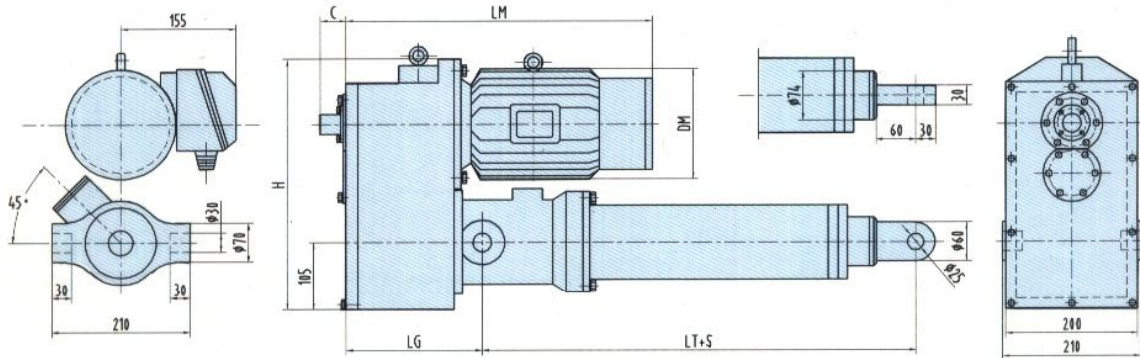
Example: thrust 2000kg, stroke 500mm, velocity 30mm/s, common screw

型号：DG 2000500-30

Model: DG 2000500-30

3.1 2000kg电动推杆

2000kg motor cylinder



a. BSDb 型精密滚珠螺母丝杆电动推杆技术、外形参数

Technical and overall parameter of Model BSDb precision ball screw motor cylinders

| 型号 Model | 速度V(mm/s) Velocity | 功率(KW) Power | DM | LM | C | LG | H |
|-------------|-----------------------|-----------------|-----|-----|----|-----|-----|
| BSDbm2000 | 30 | 0.75 | 170 | 464 | 39 | 206 | 412 |
| BSDbn2000 | 60 | 1.5 | 180 | 484 | 39 | 206 | 412 |

| | | | | | |
|-------------------------------|-----|------|------|------|------|
| 行程S(mm) Stroke | 300 | 500 | 700 | 1000 | 1500 |
| 静止尺寸LT(mm) Stationary size | 670 | 870 | 1070 | 1370 | 1870 |
| 最大尺寸LT+S(mm) Max.size | 970 | 1370 | 1770 | 2370 | 3370 |
| 重量(kg) Weight | 80 | 90 | 95 | 105 | 110 |

b. DG 型普通螺母丝杆电动推杆技术、外形参数

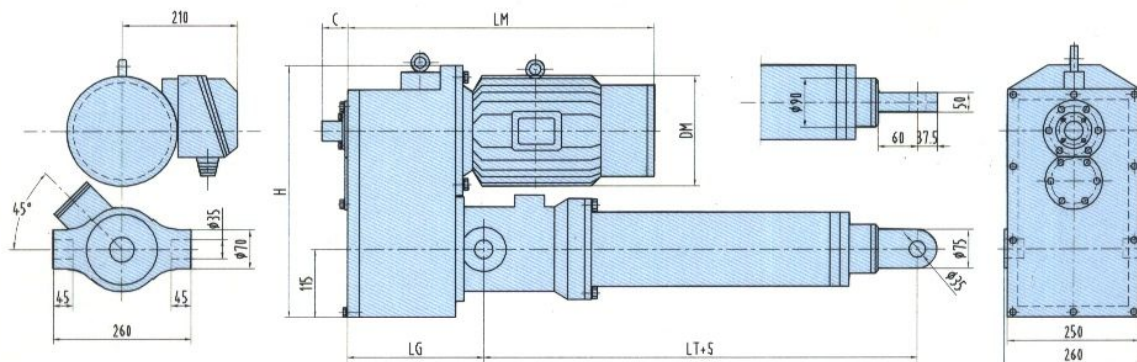
Technical and overall parameter of Model DG common screw motor cylinder

| 型号 Model | 速度V(mm/s) Velocity | 功率(KW) Power | DM | LM | C | LG | H |
|-------------|-----------------------|-----------------|-----|-----|----|-----|-----|
| DGbm2000 | 30 | 2.2 | 210 | 504 | 39 | 206 | 452 |
| DGbn2000 | 60 | 4 | 230 | 574 | 39 | 206 | 462 |

| | | | | | |
|-------------------------------|------|------|------|------|------|
| 行程S(mm) Stroke | 300 | 500 | 700 | 1000 | 1500 |
| 静止尺寸LT(mm) Stationary size | 820 | 1120 | 1220 | 1520 | 2020 |
| 最大尺寸LT+S(mm) Max.size | 1120 | 1520 | 1920 | 2520 | 3520 |
| 重量(kg) Weight | 85 | 95 | 105 | 115 | 120 |

3.2 4000kg电动推杆

4000kg motor cylinder



a. BSDb 型精密滚珠螺母丝杆电动推杆技术、外形参数

Technical and overall parameter of Model BSDb precision ball screw motor cylinder

| 型号 Model | 速度V(mm/s) Velocity | 功率(KW) Power | DM | LM | C | LG | H |
|-------------|-----------------------|-----------------|-----|-----|----|-----|-----|
| BSDbm4000 | 30 | 2.2 | 230 | 582 | 39 | 219 | 450 |
| BSDbn4000 | 45 | 3 | 210 | 512 | 39 | 219 | 450 |

| | | | | | |
|-------------------------------|------|------|------|------|------|
| 行程S(mm) Stroke | 300 | 500 | 700 | 1000 | 1500 |
| 静止尺寸LT(mm) Stationary size | 735 | 935 | 1135 | 1435 | 1935 |
| 最大尺寸LT+S(mm) Max.size | 1035 | 1435 | 1835 | 2435 | 3435 |
| 重量(kg) Weight | 205 | 210 | 215 | 220 | 228 |

b. DG 型普通螺母丝杆电动推杆技术、外形参数

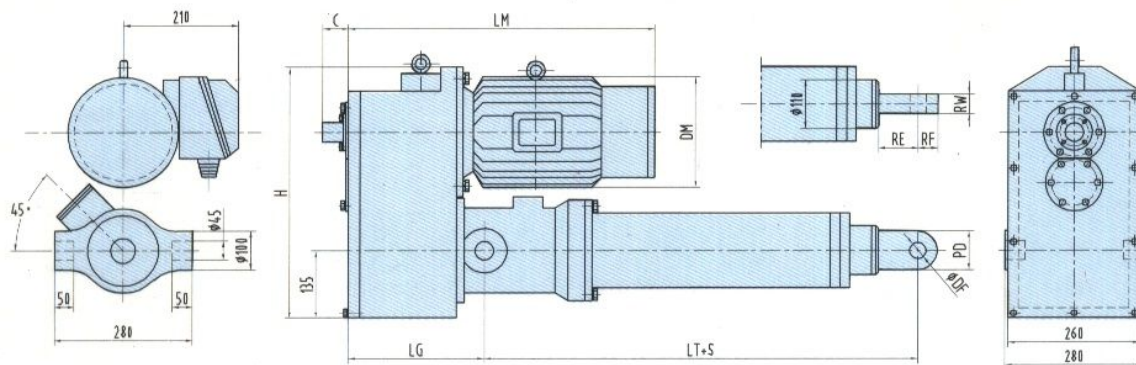
Technical and overall parameter of Model DG common screw motor cylinder

| 型号 Model | 速度V(mm/s) Velocity | 功率(KW) Power | DM | LM | C | LG | H |
|-------------|-----------------------|-----------------|-----|-----|----|-----|-----|
| DGbm4000 | 30 | 4 | 270 | 682 | 39 | 219 | 450 |
| DGbn4000 | 45 | 5.5 | 270 | 642 | 39 | 219 | 450 |

| | | | | | |
|-------------------------------|------|------|------|------|------|
| 行程S(mm) Stroke | 300 | 500 | 700 | 1000 | 1500 |
| 静止尺寸LT(mm) Stationary size | 892 | 1092 | 1292 | 1592 | 2092 |
| 最大尺寸LT+S(mm) Max.size | 1192 | 1592 | 1992 | 2592 | 3592 |
| 重量(kg) Weight | 215 | 220 | 225 | 230 | 239 |

3.3 6000kg电动推杆

6000kg motor cylinder



a. BSDb 型精密滚珠螺母丝杆电动推杆技术、外形参数

Technical and overall parameter of Model BSDb precision ball screw motor cylinder

| 型号 Model | 速度V(mm/s) Velocity | 功率(KW) Power | DM | LM | C | LG | H |
|-------------|-----------------------|-----------------|-----|-----|----|-----|-----|
| BSDbm6000 | 30 | 3 | 270 | 660 | 50 | 255 | 537 |
| BSDbn6000 | 45 | 4 | 230 | 600 | 50 | 255 | 537 |

| 行程S(mm) Stroke | 静止尺寸LT(mm) Stationary size | 最大尺寸LT+S(mm) Max.size | PD | DF | RW | RE | RF | 重量(kg) Weight |
|-------------------|-------------------------------|--------------------------|-----|----|----|-----|----|------------------|
| 300 | 880 | 1180 | 75 | 35 | 40 | 55 | 38 | 220 |
| 500 | 1080 | 1580 | | | | | | 230 |
| 1000 | 1580 | 2580 | | | | | | 250 |
| 1500 | 2080 | 3580 | 110 | 50 | 70 | 100 | 55 | 300 |
| 2000 | 2580 | 4580 | | | | | | 325 |

b. DG 型普通螺母丝杆电动推杆技术、外形参数

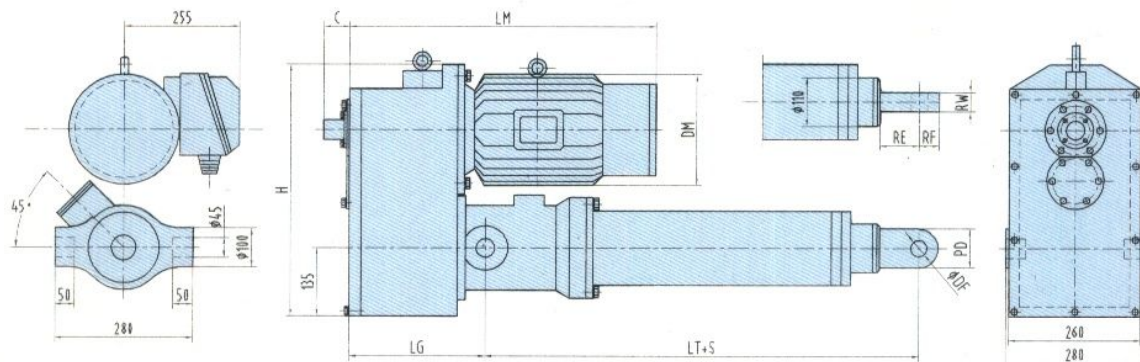
Technical and overall parameter of Model DG common screw motor cylinder

| 型号 Model | 速度V(mm/s) Velocity | 功率(KW) Power | DM | LM | C | LG | H |
|-------------|-----------------------|-----------------|-----|-----|----|-----|-----|
| DGbm6000 | 30 | 5.5 | 270 | 700 | 50 | 255 | 567 |
| DGbn6000 | 45 | 7.5 | 270 | 700 | 50 | 255 | 567 |

| 行程S(mm) Stroke | 静止尺寸LT(mm) Stationary size | 最大尺寸LT+S(mm) Max.size | PD | DF | RW | RE | RF | 重量(kg) Weight |
|-------------------|-------------------------------|--------------------------|-----|----|----|-----|----|------------------|
| 300 | 964 | 1264 | 75 | 35 | 40 | 55 | 38 | 240 |
| 500 | 1164 | 1664 | | | | | | 250 |
| 1000 | 1664 | 2664 | | | | | | 275 |
| 1500 | 2164 | 3664 | 110 | 50 | 70 | 100 | 55 | 330 |
| 2000 | 2664 | 4664 | | | | | | 360 |

3.4 8000kg电动推杆

8000kg motor cylinder



a. BSDb 型精密滚珠螺母丝杆电动推杆技术、外形参数

Technical and overall parameter of Model BSDb precision ball screw motor cylinder

| 型号 Model | 速度V(mm/s) Velocity | 功率(KW) Power | DM | LM | C | LG | H |
|-------------|-----------------------|-----------------|-----|-----|----|-----|-----|
| BSDbm8000 | 36 | 4 | 270 | 700 | 50 | 255 | 567 |
| BSDbn8000 | 54 | 5.5 | 270 | 660 | 50 | 255 | 567 |

| 行程S(mm) Stroke | 静止尺寸LT(mm) Stationary size | 最大尺寸LT+S(mm) Max.size | PD | DF | RW | RE | RF | 重量(kg) Weight |
|-------------------|-------------------------------|--------------------------|-----|----|----|-----|----|------------------|
| 300 | 910 | 1210 | 95 | 45 | 40 | 50 | 50 | 250 |
| 500 | 1110 | 1610 | | | | | | 260 |
| 1000 | 1610 | 2610 | | | | | | 290 |
| 1500 | 2110 | 3610 | 110 | 50 | 70 | 100 | 55 | 360 |
| 2000 | 2610 | 4610 | | | | | | 465 |

b. DG 型普通螺母丝杆电动推杆技术、外形参数

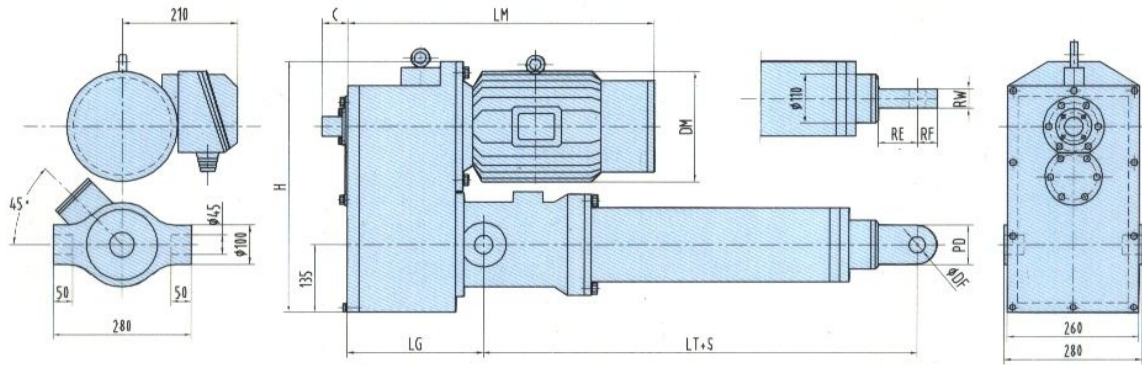
Technical and overall parameter of Model DG common screw motor cylinder

| 型号 Model | 速度V(mm/s) Velocity | 功率(KW) Power | DM | LM | C | LG | H |
|-------------|-----------------------|-----------------|-----|-----|----|-----|-----|
| DGbm8000 | 30 | 7.5 | 330 | 770 | 50 | 255 | 607 |
| DGbn8000 | 45 | 11 | 330 | 770 | 50 | 255 | 607 |

| 行程S(mm) Stroke | 静止尺寸LT(mm) Stationary size | 最大尺寸LT+S(mm) Max.size | PD | DF | RW | RE | RF | 重量(kg) Weight |
|-------------------|-------------------------------|--------------------------|-----|----|----|-----|----|------------------|
| 300 | 975 | 1275 | 95 | 45 | 50 | 75 | 50 | 275 |
| 500 | 1175 | 1675 | | | | | | 285 |
| 1000 | 1675 | 2675 | | | | | | 320 |
| 1500 | 2175 | 3675 | 110 | 50 | 70 | 100 | 55 | 380 |
| 2000 | 2675 | 4675 | | | | | | 500 |

3.5 10000kg电动推杆

10000kg motor cylinder



a. BSDb 型精密滚珠螺母丝杆电动推杆技术、外形参数

Technical and overall parameter of Model BSDb precision ball screw motor cylinder

| 型号 Model | 速度V(mm/s) Velocity | 功率(KW) Power | DM | LM | C | LG | H |
|-------------|-----------------------|-----------------|-----|-----|----|-----|-----|
| BSDo10000 | 18 | 3 | 270 | 686 | 50 | 285 | 697 |
| BSDm10000 | 27 | 4 | 230 | 626 | 50 | 285 | 667 |
| BSDn10000 | 40 | 5.5 | 270 | 686 | 50 | 285 | 697 |

| 行程S(mm) Stroke | 静止尺寸LT(mm) Stationary size | 最大尺寸LT+S(mm) Max.size | PD | DF | RW | RE | RF | 重量(kg) Weight |
|-------------------|-------------------------------|--------------------------|-----|----|----|-----|----|------------------|
| 300 | 930 | 1230 | 95 | 45 | 50 | 75 | 50 | 250 |
| 500 | 1130 | 1630 | | | | | | 260 |
| 1000 | 1630 | 2630 | | | | | | 290 |
| 1500 | 2130 | 3630 | 110 | 50 | 70 | 100 | 55 | 370 |
| 2000 | 2630 | 4630 | | | | | | 475 |

b. DG 型普通螺母丝杆电动推杆技术、外形参数

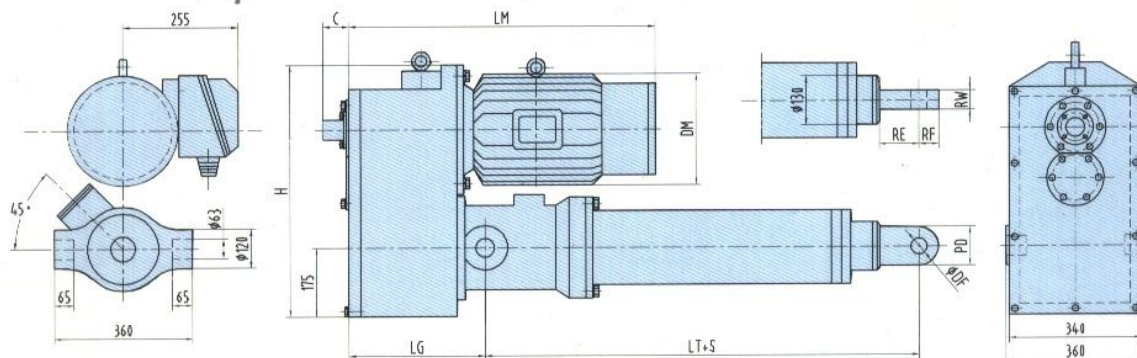
Technical and overall parameter of Model DG common screw motor cylinder

| 型号 Model | 速度V(mm/s) Velocity | 功率(KW) Power | DM | LM | C | LG | H |
|-------------|-----------------------|-----------------|-----|-----|----|-----|-----|
| DGo10000 | 18 | 5.5 | 270 | 726 | 50 | 285 | 697 |
| DGM10000 | 27 | 7.5 | 270 | 726 | 50 | 285 | 697 |
| DGN10000 | 40 | 11 | 330 | 796 | 50 | 285 | 737 |

| 行程S(mm) Stroke | 静止尺寸LT(mm) Stationary size | 最大尺寸LT+S(mm) Max.size | PD | DF | RW | RE | RF | 重量(kg) Weight |
|-------------------|-------------------------------|--------------------------|-----|----|----|-----|----|------------------|
| 300 | 990 | 1290 | 95 | 45 | 50 | 75 | 50 | 275 |
| 500 | 1190 | 1690 | | | | | | 285 |
| 1000 | 1690 | 2690 | | | | | | 320 |
| 1500 | 2190 | 3690 | 110 | 50 | 70 | 100 | 55 | 400 |
| 2000 | 2690 | 4690 | | | | | | 510 |

3.6 12000kg电动推杆

12000kg motor cylinder



a. BSDb 型精密滚珠螺母丝杆电动推杆技术、外形参数

Technical and overall parameter of Model BSDb precision ball screw motor cylinder

| 型号 Model | 速度V(mm/s) Velocity | 功率(KW) Power | DM | LM | C | LG | H |
|-------------|-----------------------|-----------------|-----|-----|----|-----|-----|
| BSDo12000 | 18 | 4 | 270 | 726 | 50 | 285 | 697 |
| BSDM12000 | 27 | 5.5 | 270 | 686 | 50 | 285 | 697 |
| BSDN12000 | 40 | 7.5 | 270 | 726 | 50 | 285 | 697 |

| 行程S(mm) Stroke | 静止尺寸LT(mm) Stationary size | 最大尺寸LT+S(mm) Max.size | PD | DF | RW | RE | RF | 重量(kg) Weight |
|-------------------|-------------------------------|--------------------------|-----|----|----|-----|----|------------------|
| 300 | 930 | 1230 | 130 | 63 | 80 | 100 | 65 | 440 |
| 500 | 1130 | 1630 | | | | | | 460 |
| 1000 | 1630 | 2630 | | | | | | 505 |
| 1500 | 2130 | 3630 | | | | | | 550 |
| 2000 | 2630 | 4630 | | | | | | 610 |

b. DG 型普通螺母丝杆电动推杆技术、外形参数

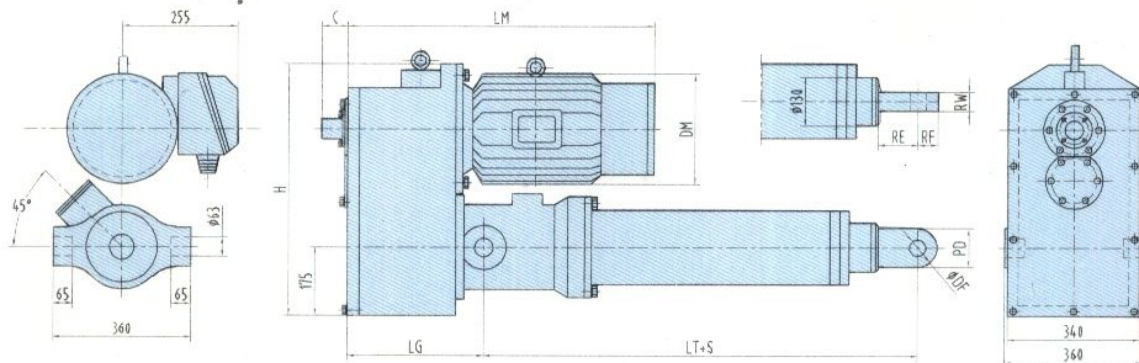
Technical and overall parameter of Model DG common screw motor cylinder

| 型号 Model | 速度V(mm/s) Velocity | 功率(KW) Power | DM | LM | C | LG | H |
|-------------|-----------------------|-----------------|-----|-----|----|-----|-----|
| DGo12000 | 18 | 7.5 | 330 | 796 | 50 | 285 | 737 |
| DGM12000 | 27 | 11 | 330 | 796 | 50 | 285 | 737 |
| DGN12000 | 40 | 15 | 330 | 841 | 50 | 285 | 737 |

| 行程S(mm) Stroke | 静止尺寸LT(mm) Stationary size | 最大尺寸LT+S(mm) Max.size | PD | DF | RW | RE | RF | 重量(kg) Weight |
|-------------------|-------------------------------|--------------------------|-----|----|----|-----|----|------------------|
| 300 | 1000 | 1300 | 130 | 63 | 80 | 100 | 65 | 455 |
| 500 | 1200 | 1700 | | | | | | 480 |
| 1000 | 1700 | 2700 | | | | | | 540 |
| 1500 | 2200 | 3700 | | | | | | 595 |
| 2000 | 2700 | 4700 | | | | | | 655 |

3.7 16000kg电动推杆

16000kg motor cylinder



a.BSDb 型精密滚珠螺母丝杆电动推杆技术、外形参数

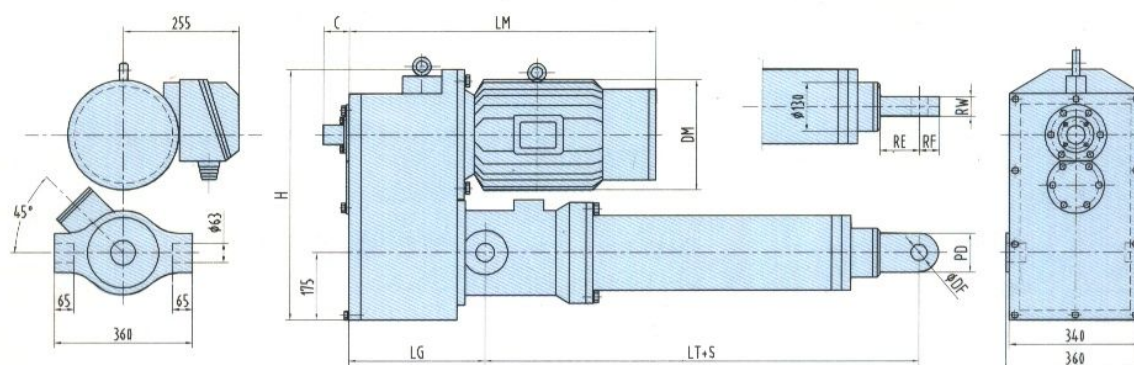
Technical and overall parameter of Model BSDb precision ball screw motor cylinder

| 型号 Model | 速度V(mm/s) Velocity | 功率(KW) Power | DM | LM | C | LG | H |
|-------------|-----------------------|-----------------|-----|-----|----|----|-----|
| BSDbo16000 | 20 | 5.5 | 270 | 760 | 55 | | 768 |
| BSDbm16000 | 30 | 7.5 | 270 | 760 | 55 | | 768 |
| BSDbn16000 | 40 | 11 | 330 | 830 | 55 | | 768 |

| 行程S(mm) Stroke | 静止尺寸LT(mm) Stationary size | 最大尺寸LT+S(mm) Max.size | PD | DF | RW | RE | RF | 重量(kg) Weight |
|-------------------|-------------------------------|--------------------------|-----|----|----|-----|----|------------------|
| 300 | 1045 | 1345 | 130 | 63 | 80 | 100 | 65 | 490 |
| 500 | 1245 | 1745 | | | | | | 510 |
| 1000 | 1745 | 2745 | | | | | | 560 |
| 1500 | 2245 | 3745 | | | | | | 610 |
| 2000 | 2745 | 4745 | | | | | | 660 |

3.8 20000kg电动推杆

20000kg motor cylinder



a.BSDb 型精密滚珠螺母丝杆电动推杆技术、外形参数

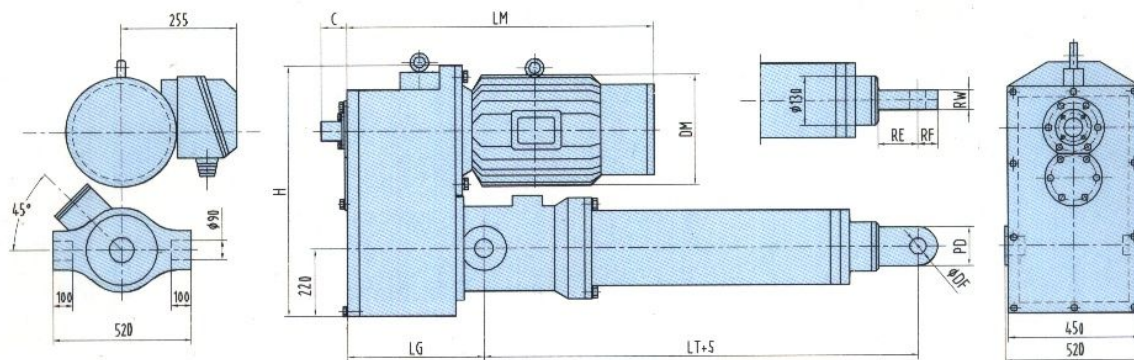
Technical and overall parameter of Model BSDb precision ball screw motor cylinder

| 型号 Model | 速度V(mm/s) Velocity | 功率(KW) Power | DM | LM | C | LG | H |
|-------------|-----------------------|-----------------|-----|-----|----|----|-----|
| BSDbo20000 | 15 | 4 | 330 | 760 | 60 | | 785 |
| BSDbm20000 | 20 | 5.5 | 270 | 760 | 60 | | 785 |
| BSDbn20000 | 25 | 7.5 | 330 | 760 | 60 | | 785 |

| 行程S(mm) Stroke | 静止尺寸LT(mm) Stationary size | 最大尺寸LT+S(mm) Max.size | PD | DF | RW | RE | RF | 重量(kg) Weight |
|-------------------|-------------------------------|--------------------------|-----|----|----|-----|----|------------------|
| 300 | 1102 | 1402 | 130 | 63 | 80 | 100 | 65 | 630 |
| 500 | 1302 | 1802 | | | | | | 650 |
| 1000 | 1802 | 2802 | | | | | | 695 |
| 1500 | 2302 | 3802 | | | | | | 760 |
| 2000 | 2802 | 4802 | | | | | | 810 |

3.9 30000kg电动推杆

30000kg motor cylinder



a BSDb 型精密滚珠螺母丝杆电动推杆技术、外形参数

Technical and overall parameter of Model BSDb precision ball screw motor cylinder

| 型号 Model | 速度V(mm/s) Velocity | 功率(KW) Power | DM | LM | C | LG | H |
|-------------|-----------------------|-----------------|-----|-----|----|----|-----|
| BSDbo30000 | 12.5 | 5.5 | 330 | 760 | 60 | | 928 |
| BSDbm30000 | 16.6 | 7.5 | 330 | 780 | 60 | | 928 |
| BSDbn30000 | 25 | 11 | 330 | 860 | 60 | | 928 |

| 行程S(mm) Stroke | 静止尺寸LT(mm) Stationary size | 最大尺寸LT+S(mm) Max.size | PD | DF | RW | RE | RF | 重量(kg) Weight |
|-------------------|-------------------------------|--------------------------|-----|----|-----|-----|----|------------------|
| 300 | 1275 | 1575 | 180 | 90 | 125 | 140 | 90 | 1030 |
| 500 | 1475 | 1975 | | | | | | 1190 |
| 1000 | 1975 | 2975 | | | | | | 1270 |
| 1500 | 2475 | 3975 | | | | | | 1370 |
| 2000 | 2975 | 4975 | | | | | | 1500 |

4、XDT型电动推杆 Model-XDT Motor cylinder

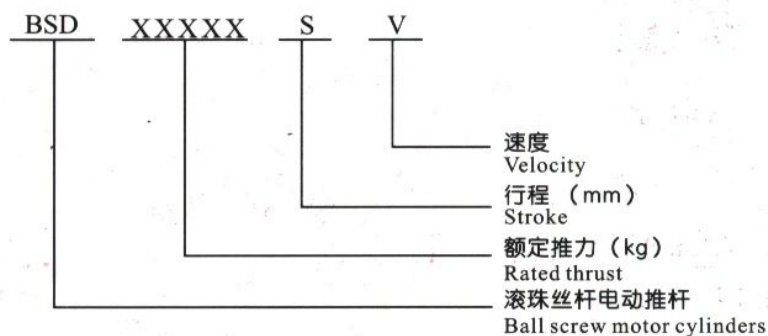
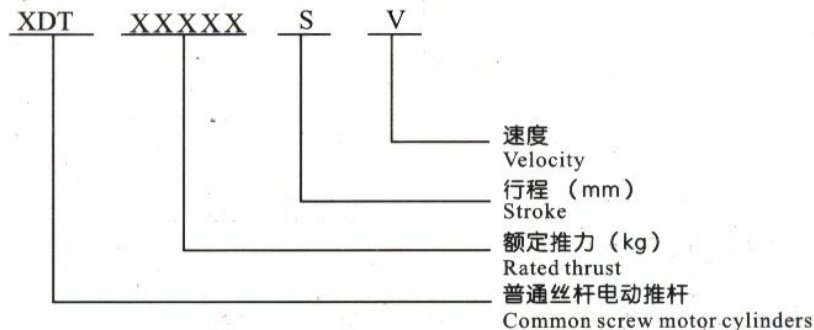
4.1 主要参数与订货代号

Main technical parameters and ordering code

| 机座号 BaseNo. | 推力 P (kg) Push force | 行程 S (mm) Stroke | 速度 V mm/s Speed | 电机功率 (kw) Power of the motor | 订货代号 Ordering code | 电机功率 (kw) (kw) | 订货代号 Ordering code |
|----------------|-------------------------|---------------------|--------------------|---------------------------------|-----------------------|-------------------|-----------------------|
| I | 1000 | <2000 | 33 | 1.1 | XDT1000S-33 | 0.55 | BSD1000S-33 |
| I | 2000 | | | 2.2 | XDT2000S-33 | 1.1 | BSD2000S-33 |
| I | 3000 | | | 3 | XDT3000S-33 | 1.5 | BSD3000S-33 |
| II | 4000 | <2000 | 34 | 4 | XDT4000S-34 | 2.2 | BSD4000S-34 |
| II | 5000 | | | 5.5 | XDT5000S-34 | 3 | BSD5000S-34 |
| II | 7000 | | | 7.5 | XDT7000S-34 | 4 | BSD7000S-34 |
| III | 10000 | <2000 | 39 | 11 | XDT10000S-39 | 5.5 | BSD10000S-39 |

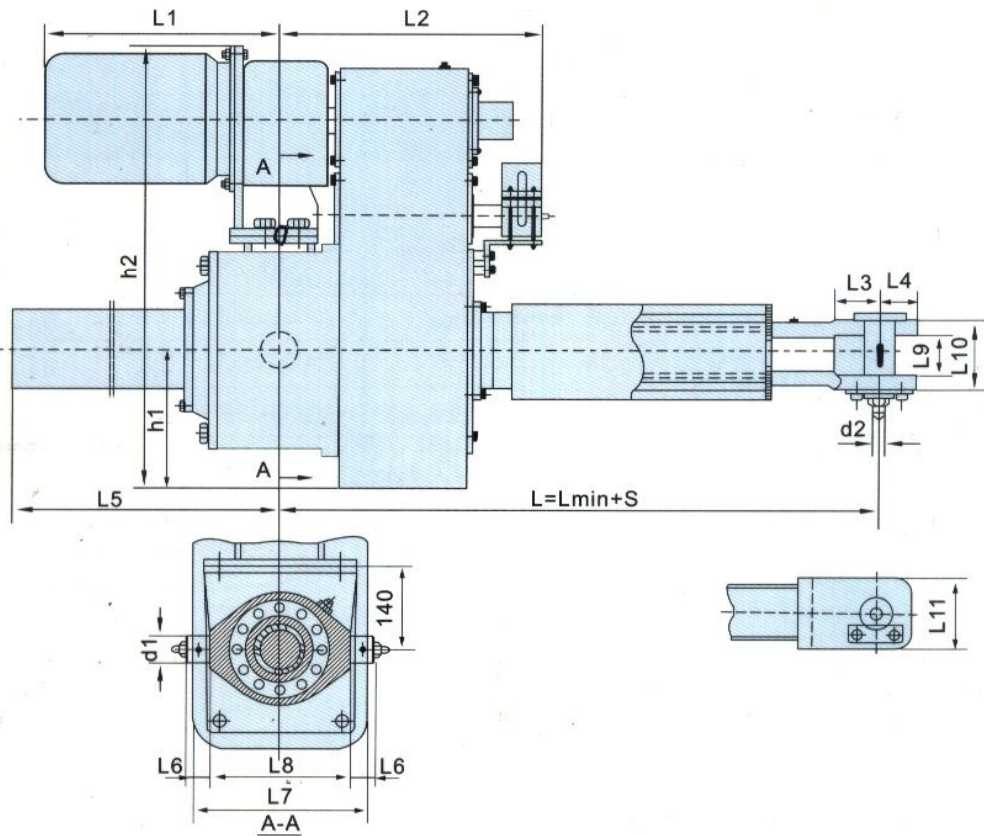
4.2 选型说明

Combination notes



4.3 安装、外形尺寸

Overall dimensions for installation



4.4 附表

Table

| 机座号 Base No. | d ₁ | d ₂ | h ₁ | h ₂ | L ₁ | L ₂ | L ₃ | L ₄ | L _{5max} | L ₆ | L ₇ | L ₈ | L ₉ | L ₁₀ | L ₁₁ | L _{min} | S | L=lmin+s |
|-----------------|------------------|------------------|----------------|----------------|----------------|----------------|----------------|----------------|-------------------|----------------|----------------|----------------|----------------|-----------------|-----------------|------------------|--------|----------|
| I | 50 _{h7} | 25 _{h7} | 140 | 505 | (365) | 360 | 40 | 35 | 2220 | 40 | 240 | 240 | 50 | 80 | 70 | 680 | 0~2000 | 680~2680 |
| II | 55 _{h7} | 40 _{h7} | 190 | 655 | (482) | 457 | 60 | 50 | 2240 | 45 | 340 | 280 | 55 | 95 | 95 | 790 | 0~2000 | 790~2790 |
| III | 60 _{h7} | 50 _{h7} | 220 | 760 | (592) | 471 | 70 | 60 | 2260 | 45 | 380 | 305 | 60 | 110 | 110 | 890 | 0~2000 | 890~2890 |

5. DT型 电动推杆 Model-DT motor cylinder

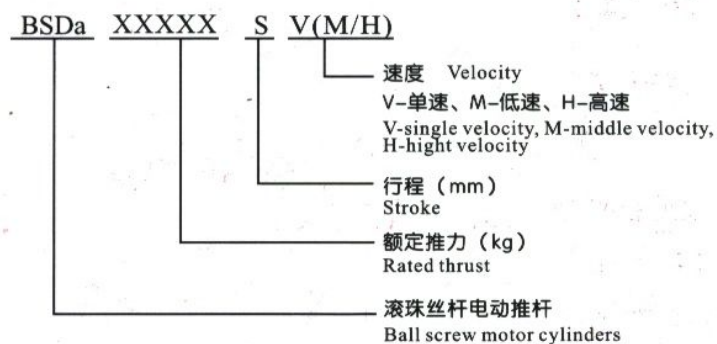
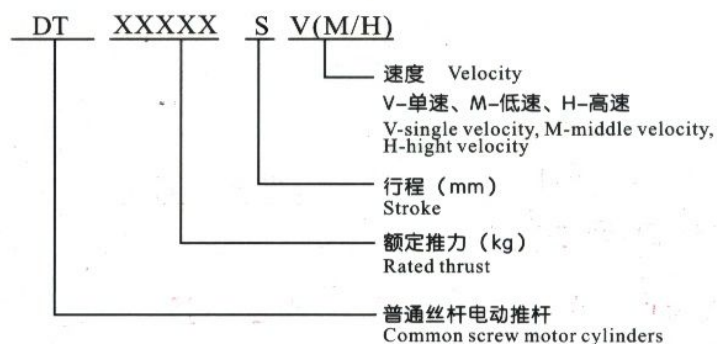
5.1 主要参数与订货代号

Main technical parameters and ordering code

| 机座号 Base No. | 推力 P (Kg) Thrust | 行程 S (mm) Stroke | 速度 V (mm/s) Speed | 电机功率 (kw) Power of the motor | 订货代号 Ordering code | 电机功率 (kw) (kw) | 订货代号 Ordering code |
|-----------------|---------------------|---------------------|----------------------|---------------------------------|-----------------------|-------------------|-----------------------|
| 001 | 10,25 | <200 | 38 | 0.040 | DT 10(25)S-38 | 0.015 | BSDa10(25)s-38 |
| 002 | 63 | <300 | | 0.090 | DT 63S-38 | 0.025 | BSDa63a-38 |
| 101 | 100 | 200 300 | 42.5/85 (M/H) | 0.12/0.25 | DT 100S-M/H | 0.060/0.120 | BSDa100s-M/H |
| 102 | 300 | 500 700 | | 0.37/0.75 | DT 300S-M/H | 0.18/0.37 | BSDa300S-M/H |
| 103 | 500 | 300 | 50/60 (M/H) | 1.1 | DT 500S-M/H | 0.55 | BSDa500S-M/H |
| | 700 | ~ | | 1.5 | DT 700S-M/H | 0.75 | BSDa700S-M/H |
| 104 | 1000 | 1000 | 72 | 2.2 | DT 1000S-72 | 1.1 | BSDa1000S-72 |

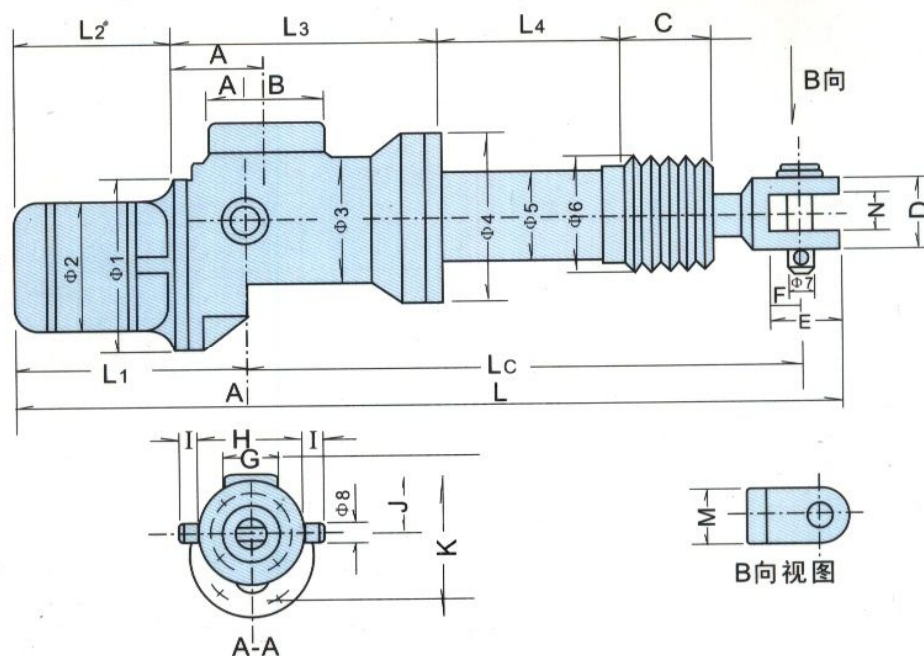
5.2 选型说明

Combination notes



5.3 安装、外形尺寸

Overall dimensions for installation



5.4 附表

Table

| 机座号 Base No. | Φ1 | Φ2 | Φ3 | Φ4 | Φ5 | Φ6 | Φ7 | Φ8 | M | 静止时 | |
|-----------------|-----|-----|-----|-----|------|-----|----|----|----|-------|-------|
| | | | | | | | | | | L | LC |
| 101 | 160 | 130 | 112 | 130 | 63.5 | 95 | 14 | 25 | 30 | 545+S | 253+S |
| 102 | | | | | | | | | | 565+S | |
| 103 | 200 | 140 | 140 | 170 | 80 | 120 | 18 | 35 | 40 | 600+S | 281+S |
| 104 | | 170 | | | | | | | | 616+S | |

| 机座号 Base No. | L1 | L2 | L3 | L4 | A | B | C | D | E | F | G | H | I | J | K | N |
|-----------------|-------|-------|-----|------|------|-----|----|----|----|----|----|-----|----|-----|-----|----|
| 101 | (277) | (212) | 232 | S-44 | 86.5 | 145 | 75 | 40 | 40 | 25 | 96 | 130 | 20 | 97 | 225 | 20 |
| 102 | (297) | (232) | | | | | | | | | | | | | | |
| 103 | (299) | (229) | 279 | S-63 | 92 | 145 | 75 | 50 | 50 | 30 | 96 | 150 | 25 | 114 | 280 | 25 |
| 104 | (315) | (245) | | | | | | | | | | | | | | |

